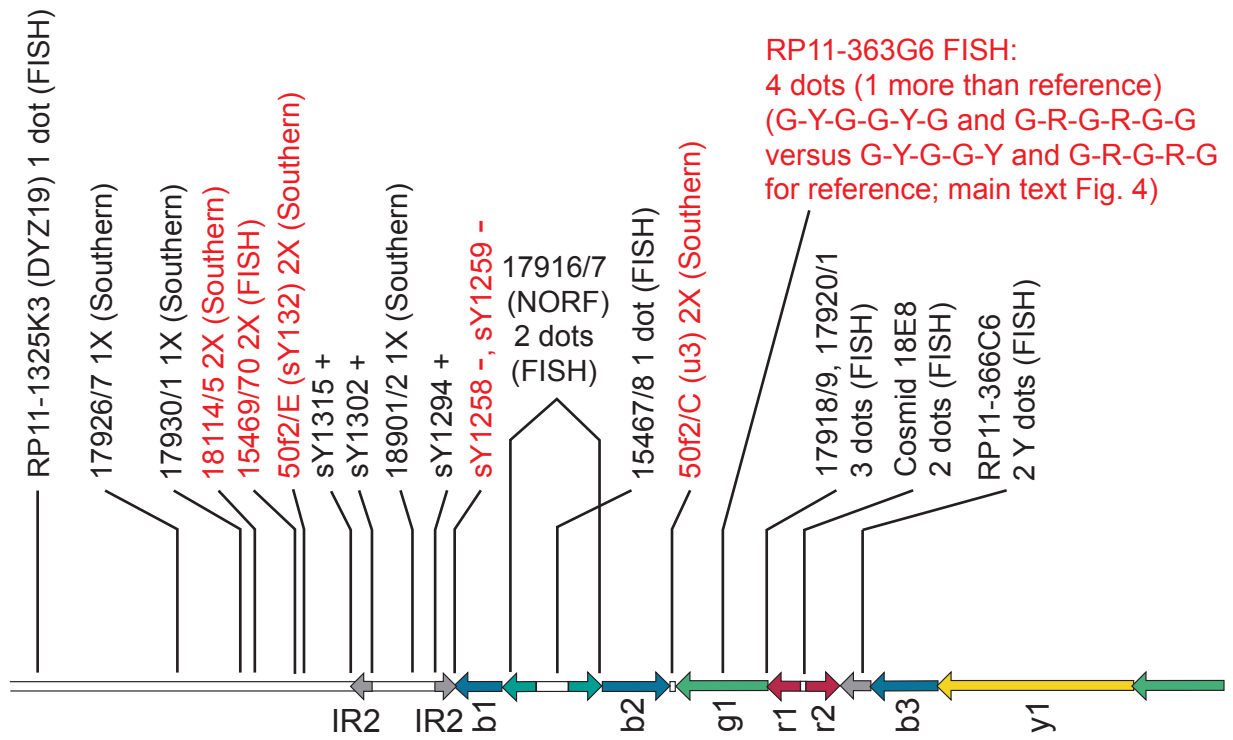
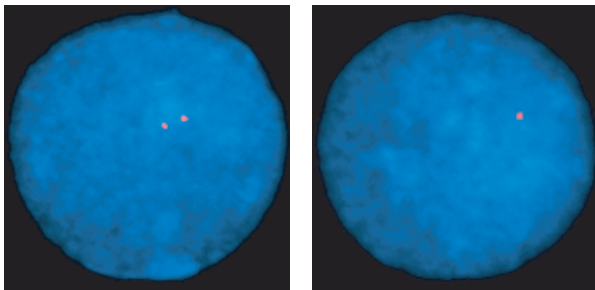


Repping et al. **Supplementary Figure 4** The Y chromosome of YCC038 has a small deletion and two small, discontinuous duplications in proximal *AZFc* and in the region proximal to *AZFc*. Red text indicates results different from the reference sequence. "Southern" indicates *EcoRI* Southern blot probed with the PCR product indicated; see Supplementary Methods for primers and conditions.



Probe = LR PCR product 15469/70

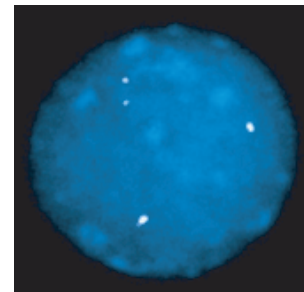


YCC038

WHT2324

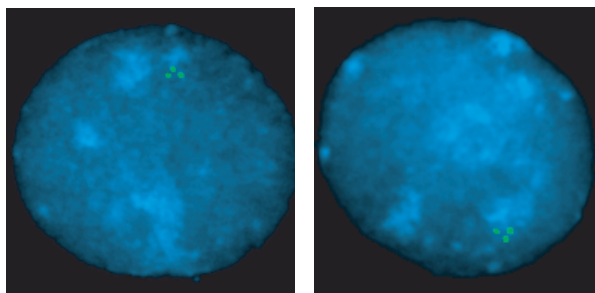
(control with *AZFc* reference architecture and 1 copy of the region spanned by P5 and *AZFc*, as assayed by FISH with 1325K3)

Probe = RP11-366C6 (detects gray amplicon; see Supplementary Methods for assay details)



YCC038

Probe = LR PCR product 17918/9

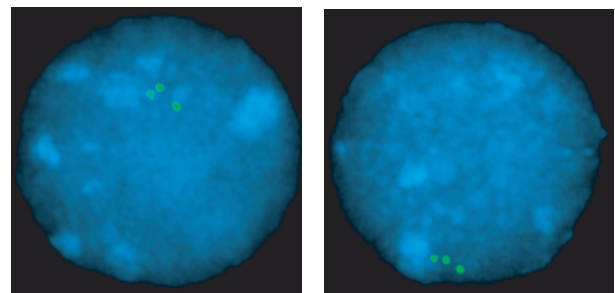


YCC038

PD223

(reference *AZFc*)

Probe = LR PCR product 17920/1



YCC038

PD223

(reference *AZFc*)