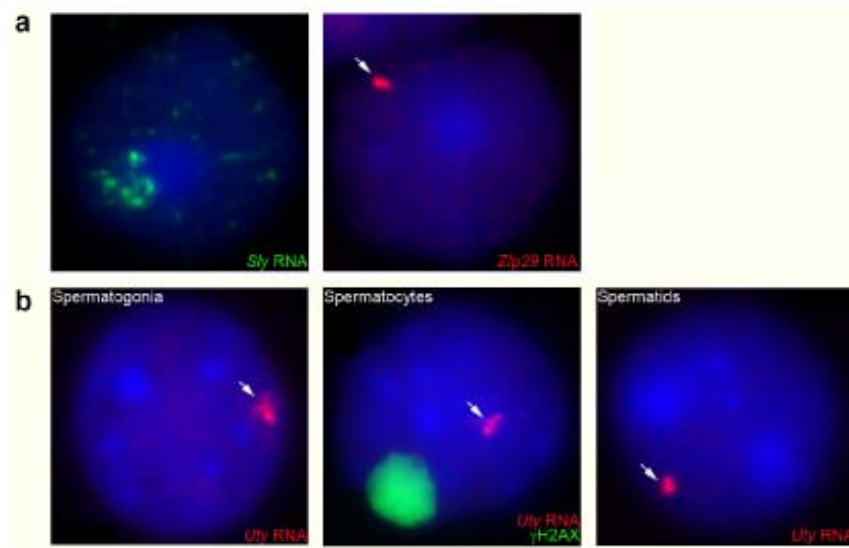


Supplementary Figure 3



RNA-FISH control probes. **a**, Expression of Sly and Zscan2 (Zfp29) in round spermatids by RNA FISH. Sly is a multicopy gene and shows multiple spots covering the Y chromosome, as well as exported RNAs throughout the nucleus. **b**, The efficiency of RNA FISH in spermatogonia, pachytene spermatocytes and spermatids was assessed using a hemizygous Uty-BAC transgene carrying male. Expression of Uty from the autosomally-integrated transgene is detected in 98% of spermatogonia (n=100), 100% of pachytene spermatocytes (n=100) and 98% of transgene-carrying spermatids (n=200). Thus, the efficiency of RNA FISH is very high in all three cell types.