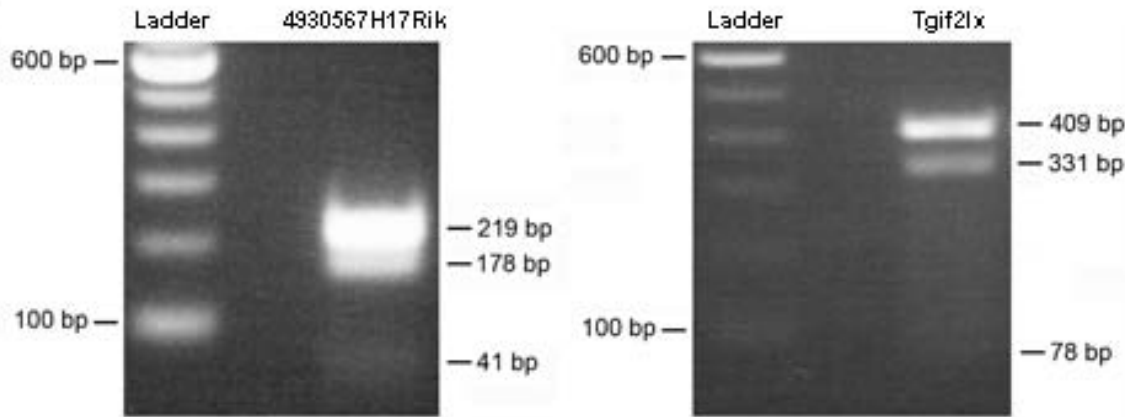


## Supplementary Figure 2

**a**



**b**



4930567H17Rik and Tgif2lx have two copy members each. Expression occurs from both copies of 4930567H17Rik and Tgif2lx as determined by RT-PCR and subsequent restriction digestion. A single nucleotide difference at position 341 (G versus T) and position 839 (T versus C) distinguishes between the two copies of 4930567H17Rik and Tgif2lx, respectively. The presence of the G nucleotide in 4930567H17Rik and T nucleotide in Tgif2lx creates a KpnI and MseI restriction site, respectively. a, Transcription occurs from both copies of 4930567H17Rik and Tgif2lx because RT-PCR products can be only partly digested. b, Sequencing of the remaining undigested bands yields only T variant products for 4930567H17Rik and C variant products for Tgif2lx, demonstrating that both copies of each of the two gene families are expressed. See Supplementary Table 3 for primer sequences.