

log₂ fold change for genes differentially expressed at $p < 0.05$

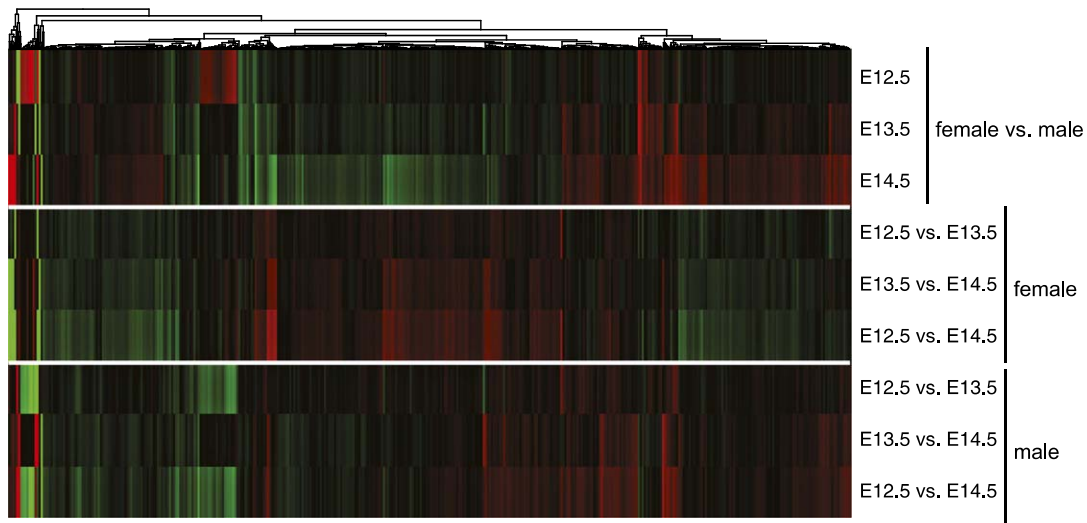


Fig. S1. Heat map showing significant changes in gene expression between male and female germ cells at each developmental time point (*Top* three rows, male divided by female), between time points in female germ cells (*Middle* three rows, later divided by earlier time points), or between time points in male germ cells (*Bottom* three rows, later divided by earlier time points). Genes were included if they were differentially regulated in at least one comparison at $P < 0.05$ after correction for multiple hypothesis testing (two-sided analysis of variance using DESeq).