

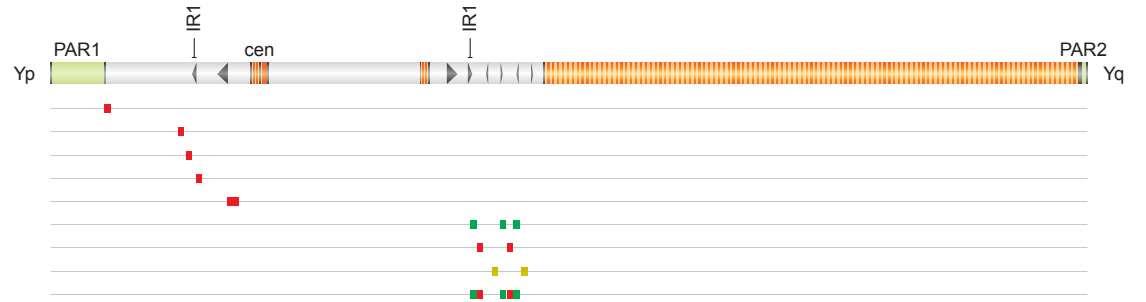
A i Structure of IR3/IR3

Reference IR3/IR3

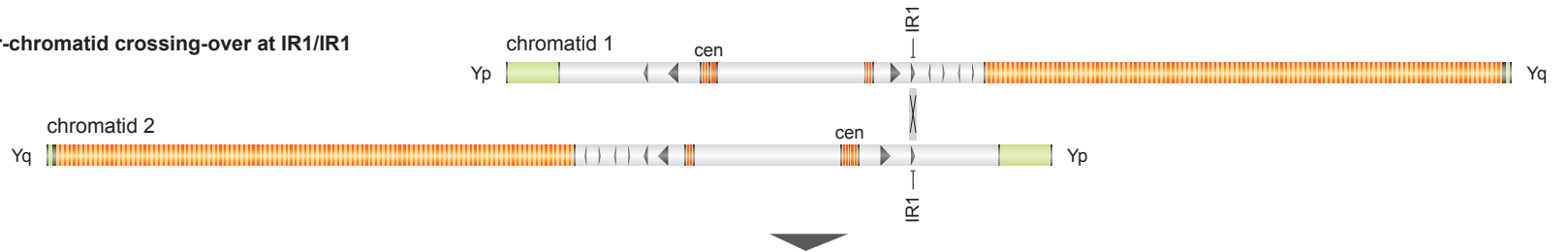
Structure of AZFc

Reference AZFc

pDP1335
 RP11-199M2
 17224/17225
 17228/17229
 RP11-516H8
 RP11-363G6
 18E8
 RP11-79J10
 RP11-363G6 + 18E8

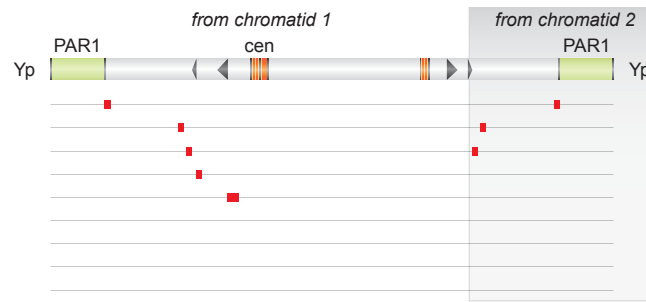


Sister-chromatid crossing-over at IR1/IR1



Pseudoisoy chromosome

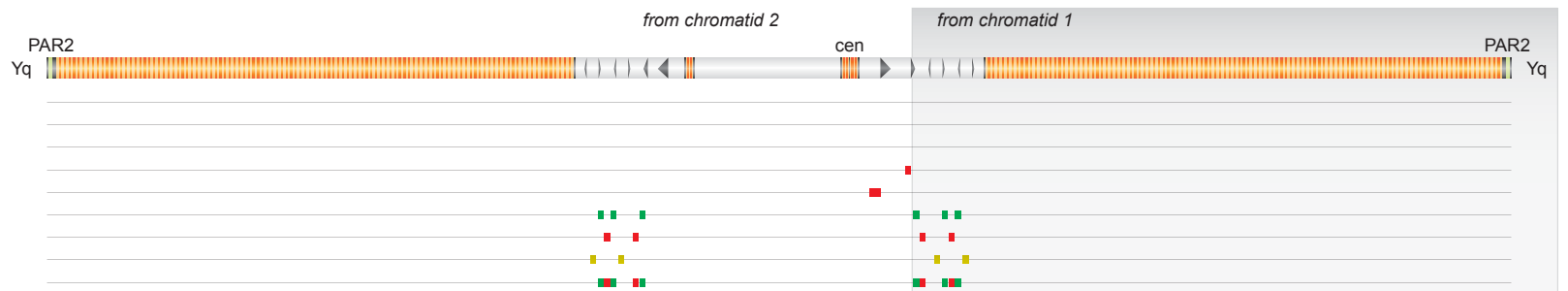
pDP1335
 RP11-199M2
 17224/17225
 17228/17229
 RP11-516H8
 RP11-363G6
 18E8
 RP11-79J10
 RP11-363G6 + 18E8



+

Pseudoisoy chromosome

pDP1335
 RP11-199M2
 17224/17225
 17228/17229
 RP11-516H8
 RP11-363G6
 18E8
 RP11-79J10
 RP11-363G6 + 18E8



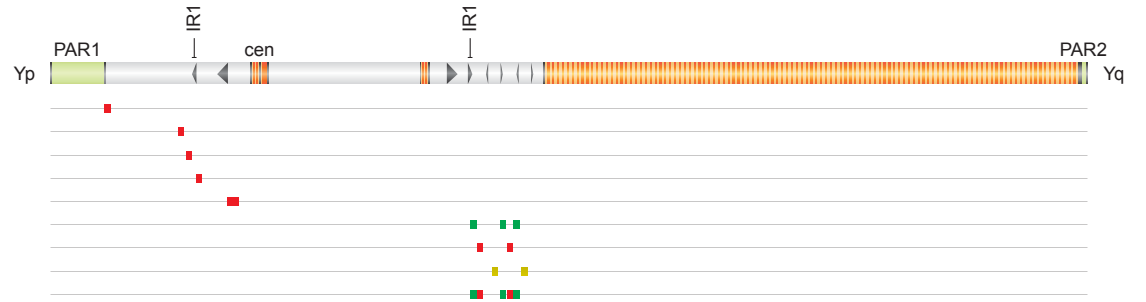
A ii Structure of IR3/IR3

Reference IR3/IR3

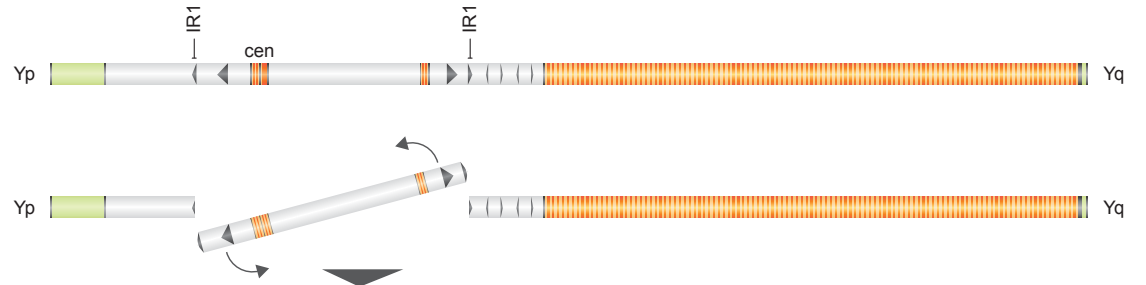
Structure of AZFc

Reference AZFc

pDP1335
 RP11-199M2
 17224/17225
 17228/17229
 RP11-516H8
 RP11-363G6
 18E8
 RP11-79J10
 RP11-363G6 + 18E8

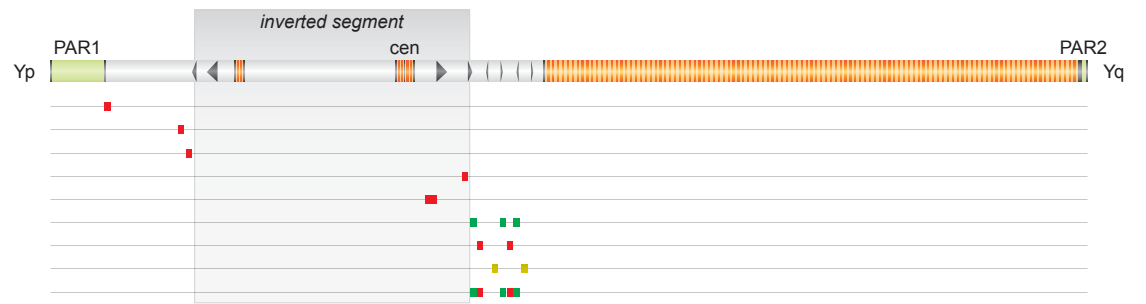


Intrachromatid crossing-over at IR1/IR1



Pericentric inversion

pDP1335
 RP11-199M2
 17224/17225
 17228/17229
 RP11-516H8
 RP11-363G6
 18E8
 RP11-79J10
 RP11-363G6 + 18E8



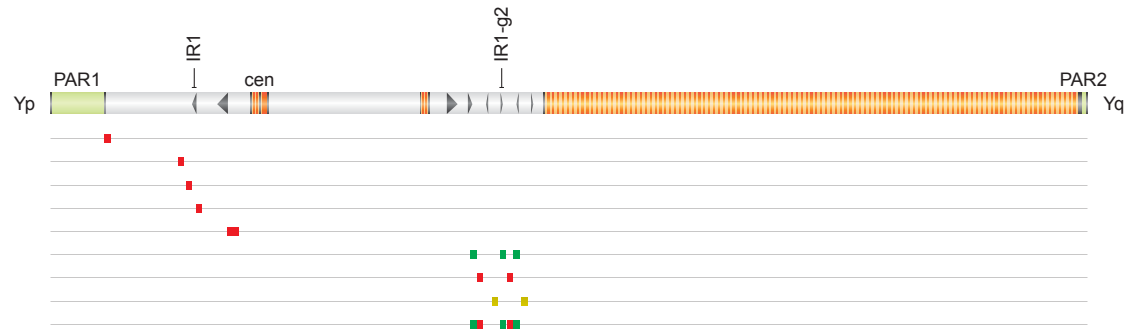
B i Structure of IR3/IR3

Reference IR3/IR3

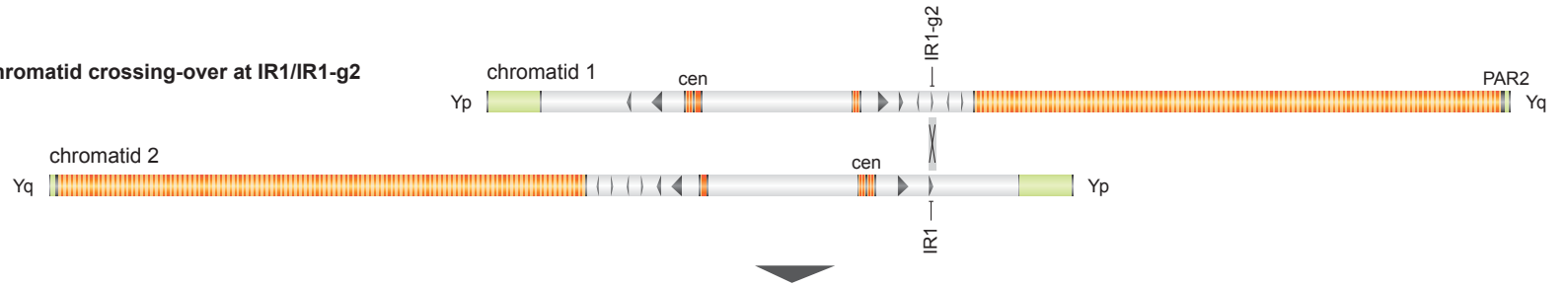
Structure of AZFc

Reference AZFc

pDP1335
 RP11-199M2
 17224/17225
 17228/17229
 RP11-516H8
 RP11-363G6
 18E8
 RP11-79J10
 RP11-363G6 + 18E8

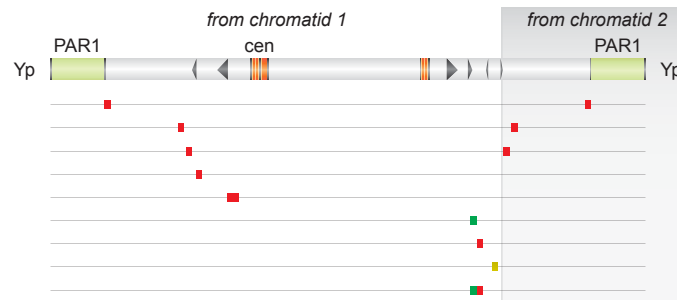


Sister-chromatid crossing-over at IR1/IR1-g2



PseudoisoYp chromosome

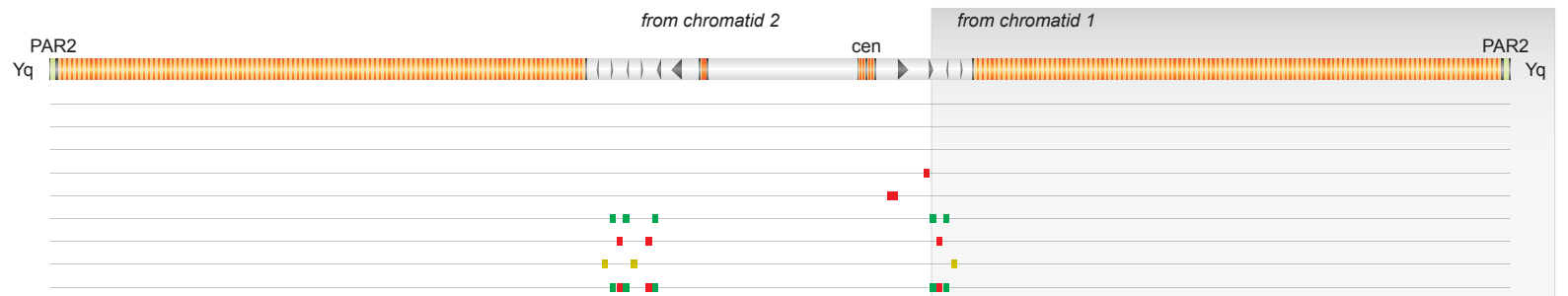
pDP1335
 RP11-199M2
 17224/17225
 17228/17229
 RP11-516H8
 RP11-363G6
 18E8
 RP11-79J10
 RP11-363G6 + 18E8



+

PseudoisoYq chromosome

pDP1335
 RP11-199M2
 17224/17225
 17228/17229
 RP11-516H8
 RP11-363G6
 18E8
 RP11-79J10
 RP11-363G6 + 18E8



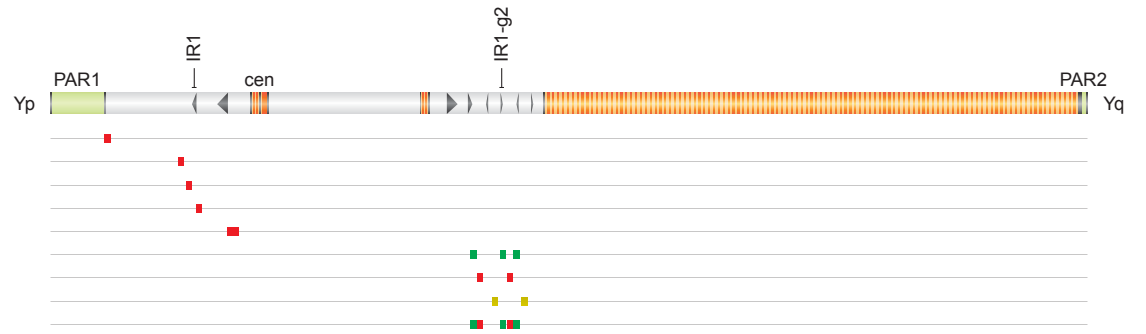
B ii Structure of IR3/IR3

Reference IR3/IR3

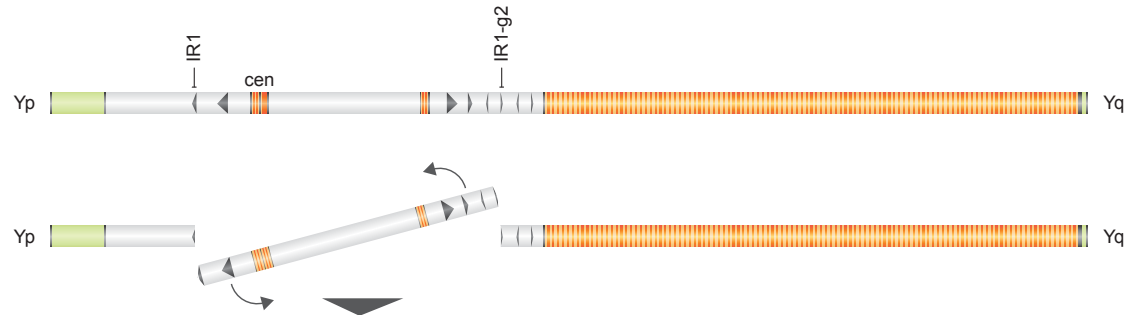
Structure of AZFc

Reference AZFc

pDP1335
 RP11-199M2
 17224/17225
 17228/17229
 RP11-516H8
 RP11-363G6
 18E8
 RP11-79J10
 RP11-363G6 + 18E8

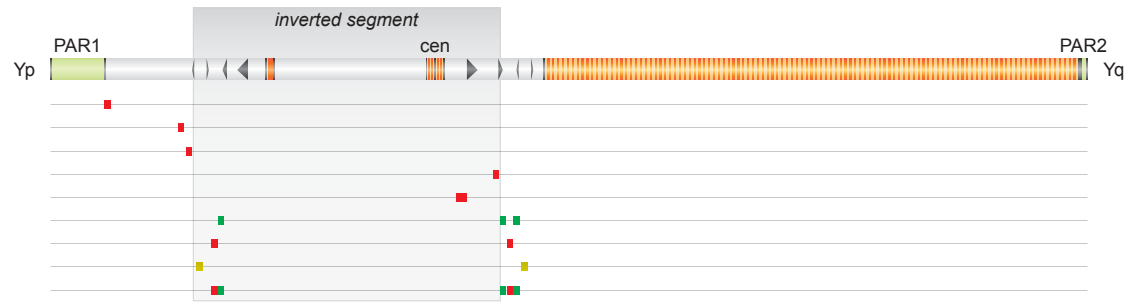


Intrachromatid crossing-over at IR1/IR1-g2



Pericentric inversion

pDP1335
 RP11-199M2
 17224/17225
 17228/17229
 RP11-516H8
 RP11-363G6
 18E8
 RP11-79J10
 RP11-363G6 + 18E8



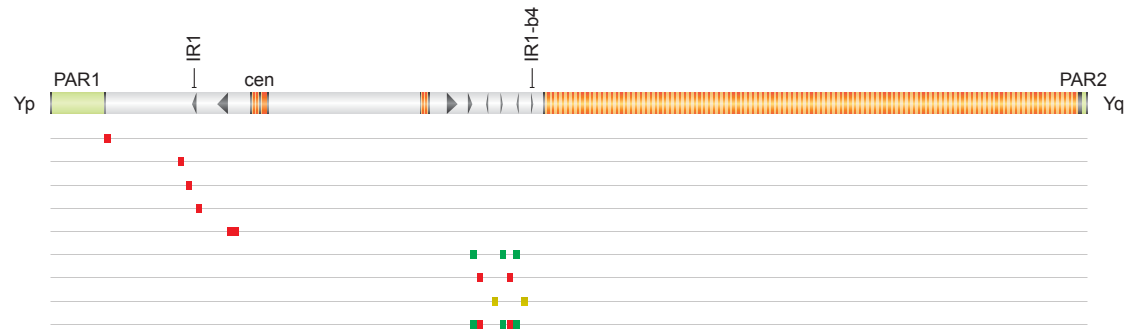
C i Structure of IR3/IR3

Reference IR3/IR3

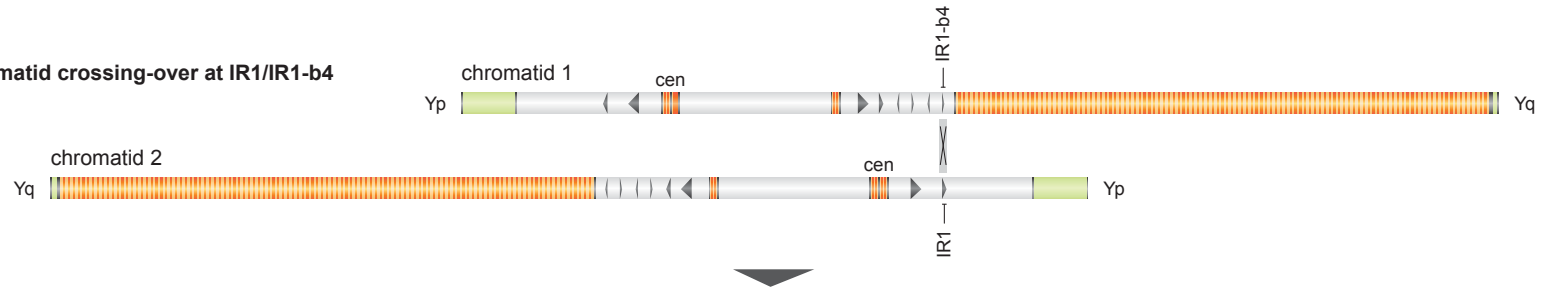
Structure of AZFc

Reference AZFc

pDP1335
 RP11-199M2
 17224/17225
 17228/17229
 RP11-516H8
 RP11-363G6
 18E8
 RP11-79J10
 RP11-363G6 + 18E8

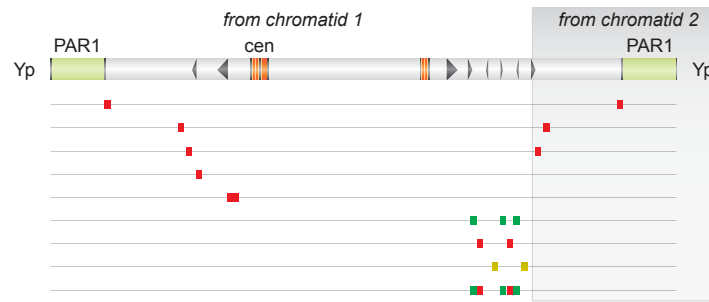


Sister-chromatid crossing-over at IR1/IR1-b4



Pseudoisoy chromosome

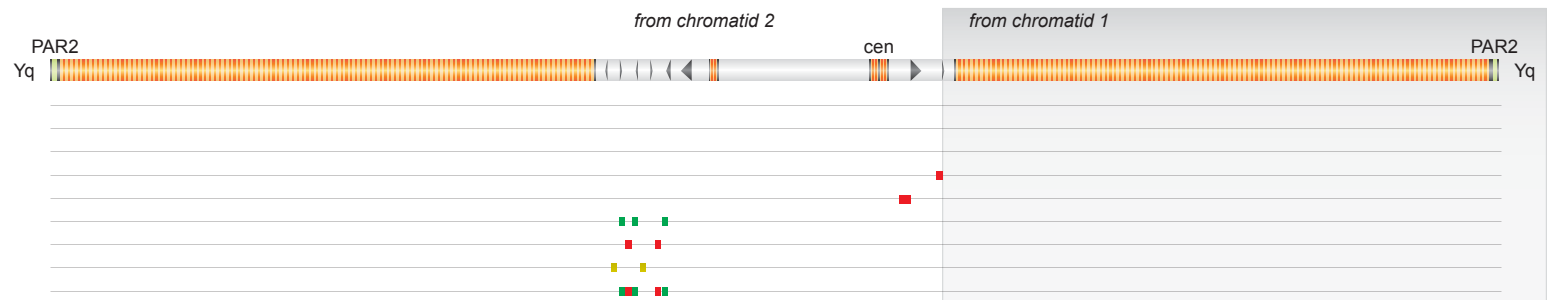
pDP1335
 RP11-199M2
 17224/17225
 17228/17229
 RP11-516H8
 RP11-363G6
 18E8
 RP11-79J10
 RP11-363G6 + 18E8



+

Pseudoisoy chromosome

pDP1335
 RP11-199M2
 17224/17225
 17228/17229
 RP11-516H8
 RP11-363G6
 18E8
 RP11-79J10
 RP11-363G6 + 18E8



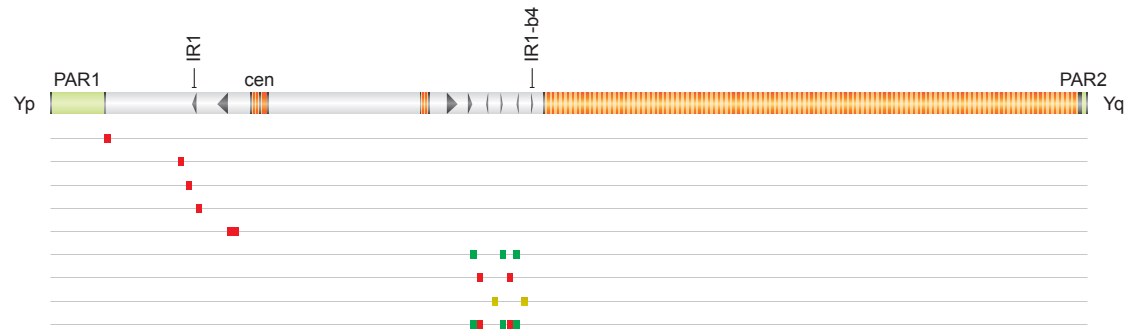
C ii Structure of IR3/IR3

Reference IR3/IR3

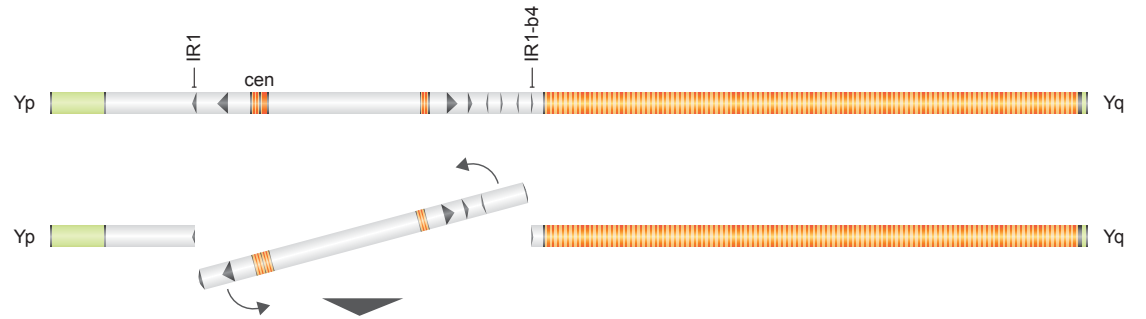
Structure of AZFc

Reference AZFc

pDP1335
 RP11-199M2
 17224/17225
 17228/17229
 RP11-516H8
 RP11-363G6
 18E8
 RP11-79J10
 RP11-363G6 + 18E8

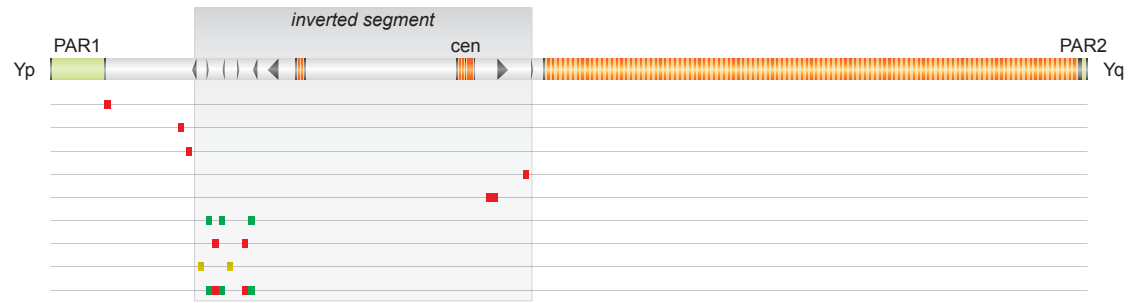


Intrachromatid crossing-over at IR1/IR1-b4



Pericentric inversion

pDP1335
 RP11-199M2
 17224/17225
 17228/17229
 RP11-516H8
 RP11-363G6
 18E8
 RP11-79J10
 RP11-363G6 + 18E8



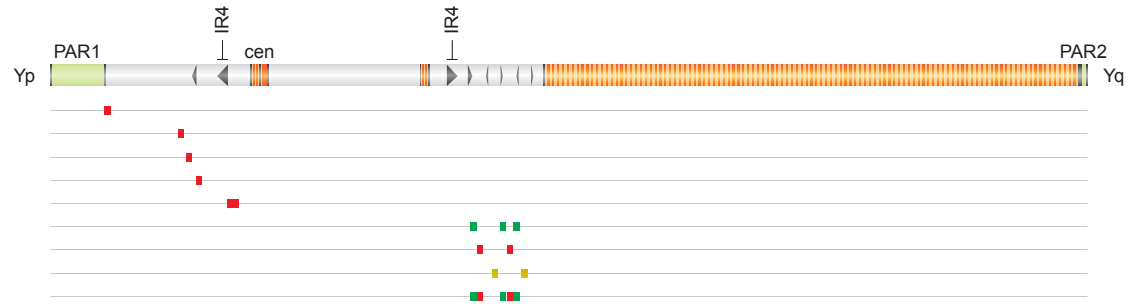
D i Structure of IR3/IR3

Reference IR3/IR3

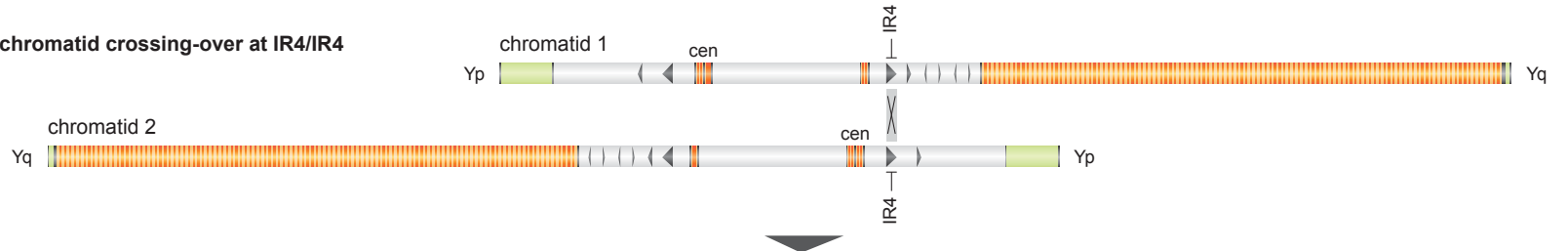
Structure of AZFc

Reference AZFc

pDP1335
 RP11-199M2
 17224/17225
 17228/17229
 RP11-516H8
 RP11-363G6
 18E8
 RP11-79J10
 RP11-363G6 + 18E8

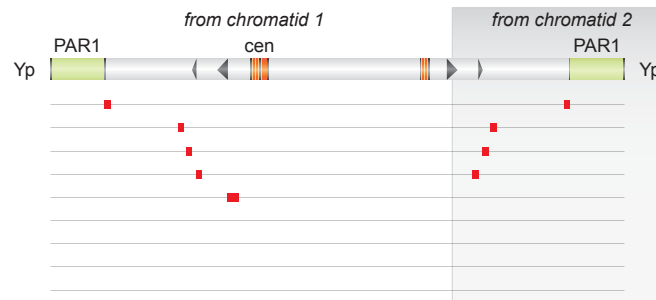


Sister-chromatid crossing-over at IR4/IR4



PseudoisoYp chromosome

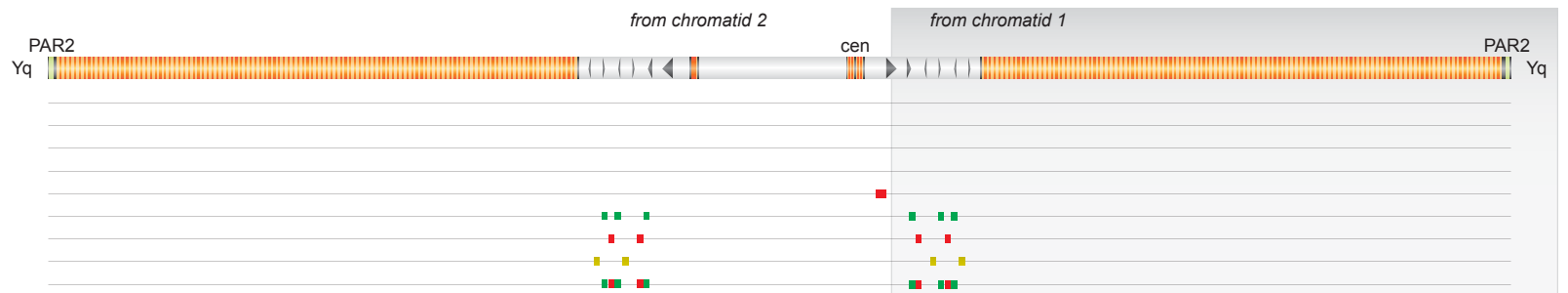
pDP1335
 RP11-199M2
 17224/17225
 17228/17229
 RP11-516H8
 RP11-363G6
 18E8
 RP11-79J10
 RP11-363G6 + 18E8



+

PseudoisoYq chromosome

pDP1335
 RP11-199M2
 17224/17225
 17228/17229
 RP11-516H8
 RP11-363G6
 18E8
 RP11-79J10
 RP11-363G6 + 18E8



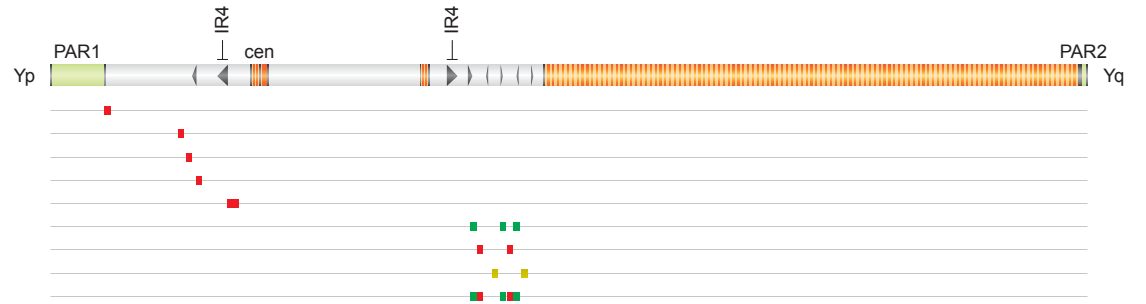
D ii Structure of IR3/IR3

Reference IR3/IR3

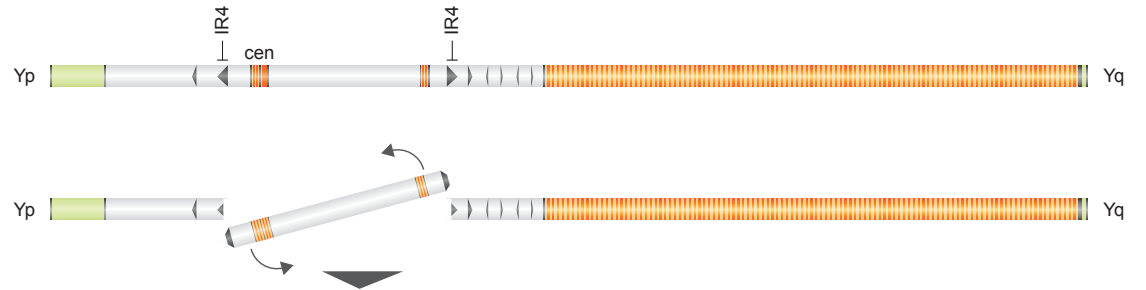
Structure of AZFc

Reference AZFc

pDP1335
 RP11-199M2
 17224/17225
 17228/17229
 RP11-516H8
 RP11-363G6
 18E8
 RP11-79J10
 RP11-363G6 + 18E8

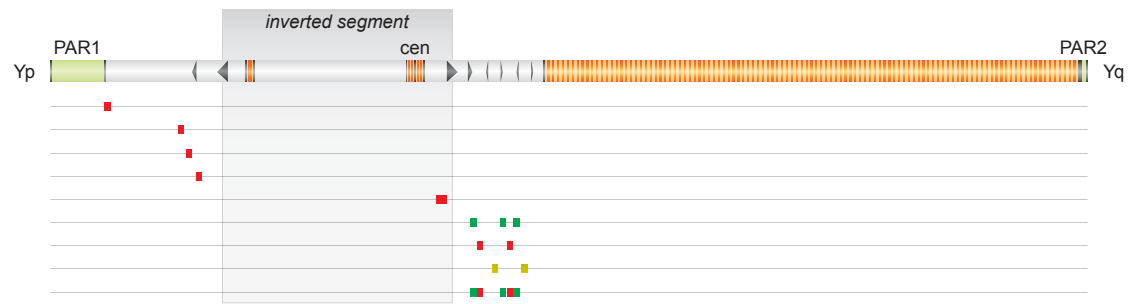


Intrachromatid crossing-over at IR4/IR4



Pericentric inversion

pDP1335
 RP11-199M2
 17224/17225
 17228/17229
 RP11-516H8
 RP11-363G6
 18E8
 RP11-79J10
 RP11-363G6 + 18E8



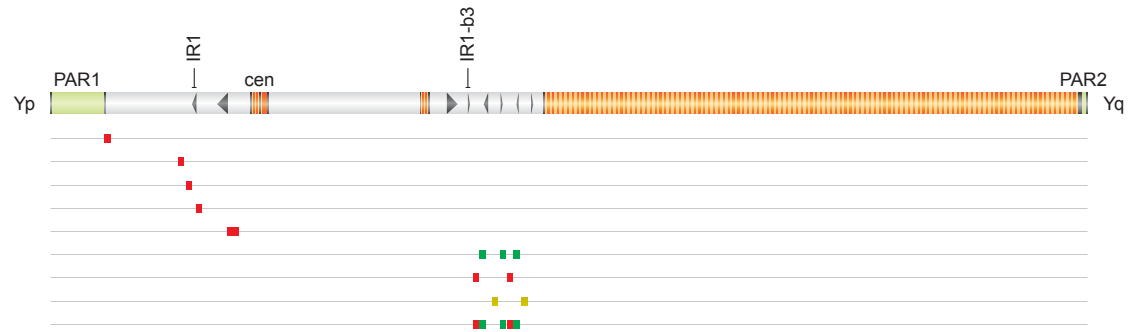
E i Structure of IR3/IR3

Reference IR3/IR3

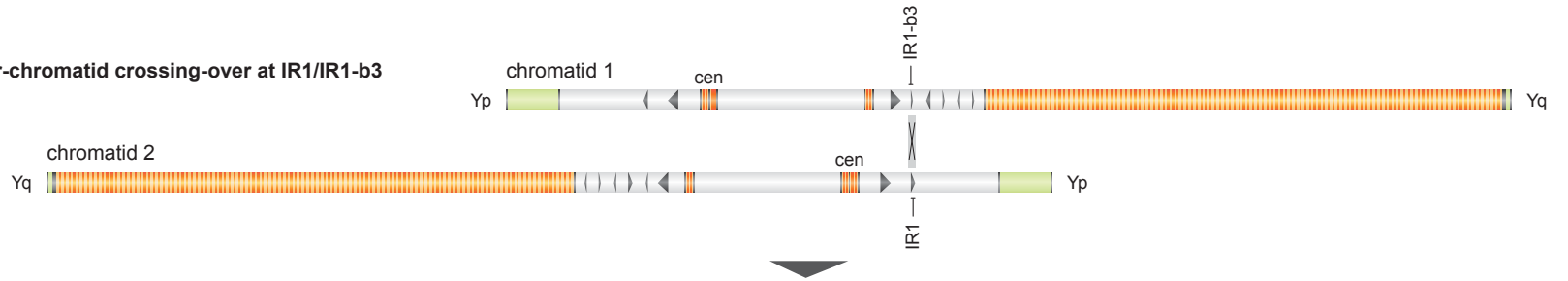
Structure of AZFc

b2/b3 inversion

pDP1335
 RP11-199M2
 17224/17225
 17228/17229
 RP11-516H8
 RP11-363G6
 18E8
 RP11-79J10
 RP11-363G6 + 18E8

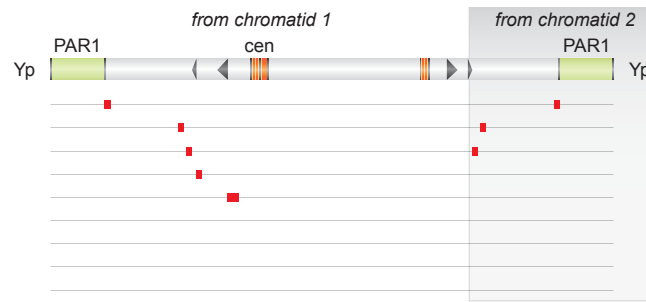


Sister-chromatid crossing-over at IR1/IR1-b3



PseudoisoYp chromosome

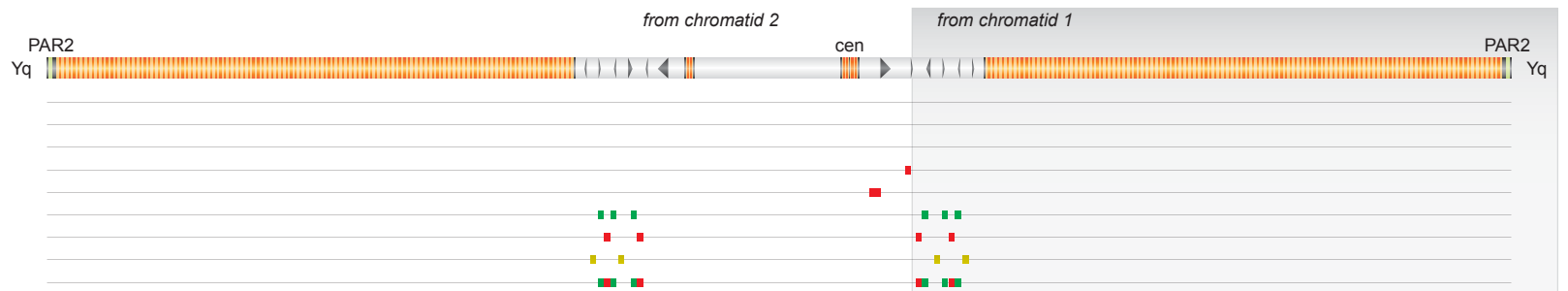
pDP1335
 RP11-199M2
 17224/17225
 17228/17229
 RP11-516H8
 RP11-363G6
 18E8
 RP11-79J10
 RP11-363G6 + 18E8



+

PseudoisoYq chromosome

pDP1335
 RP11-199M2
 17224/17225
 17228/17229
 RP11-516H8
 RP11-363G6
 18E8
 RP11-79J10
 RP11-363G6 + 18E8



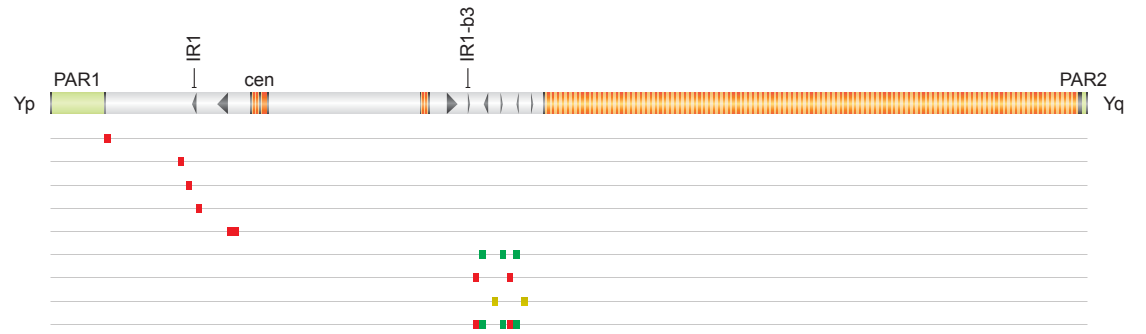
E ii Structure of IR3/IR3

Reference IR3/IR3

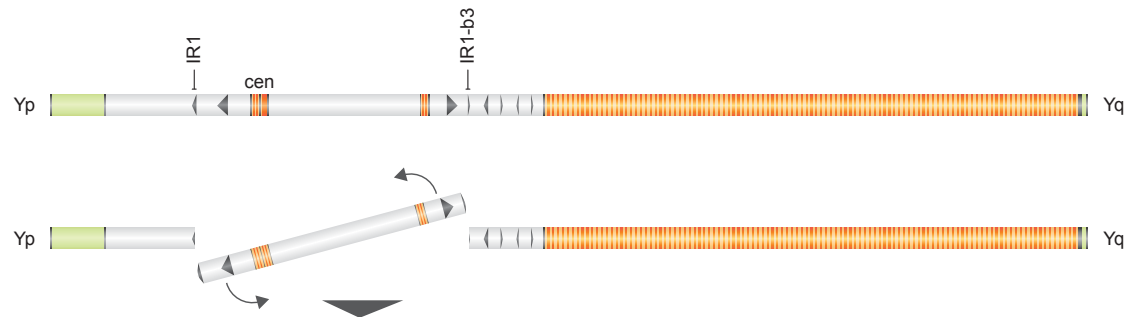
Structure of AZFc

b2/b3 inversion

pDP1335
 RP11-199M2
 17224/17225
 17228/17229
 RP11-516H8
 RP11-363G6
 18E8
 RP11-79J10
 RP11-363G6 + 18E8

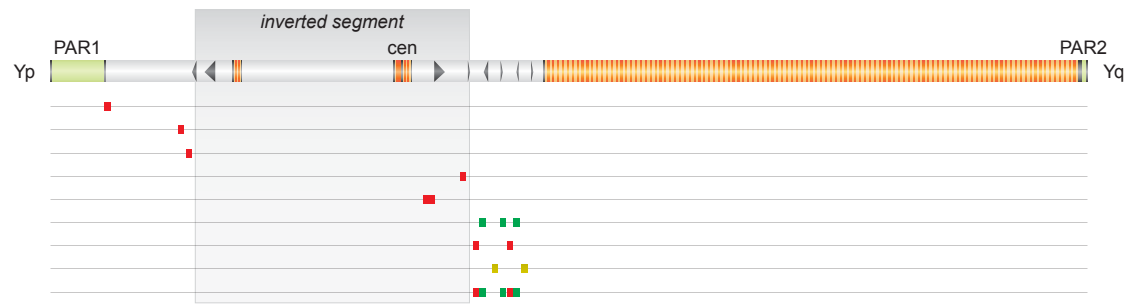


Intrachromatid crossing-over at IR1/IR1-b3



Pericentric inversion

pDP1335
 RP11-199M2
 17224/17225
 17228/17229
 RP11-516H8
 RP11-363G6
 18E8
 RP11-79J10
 RP11-363G6 + 18E8



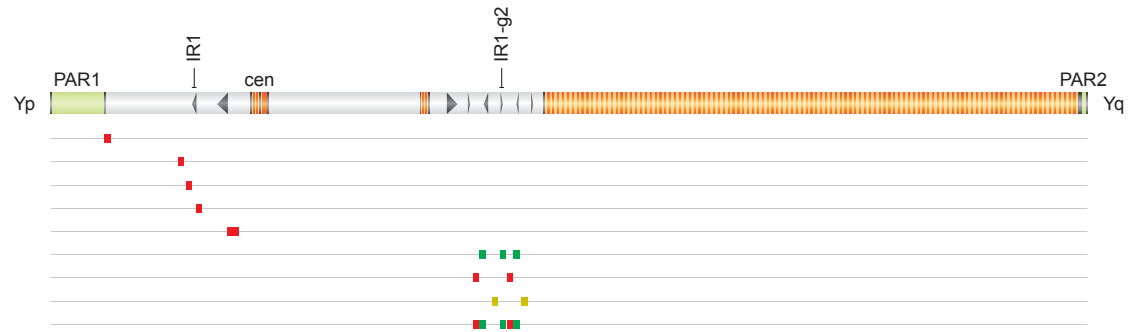
F i Structure of IR3/IR3

Reference IR3/IR3

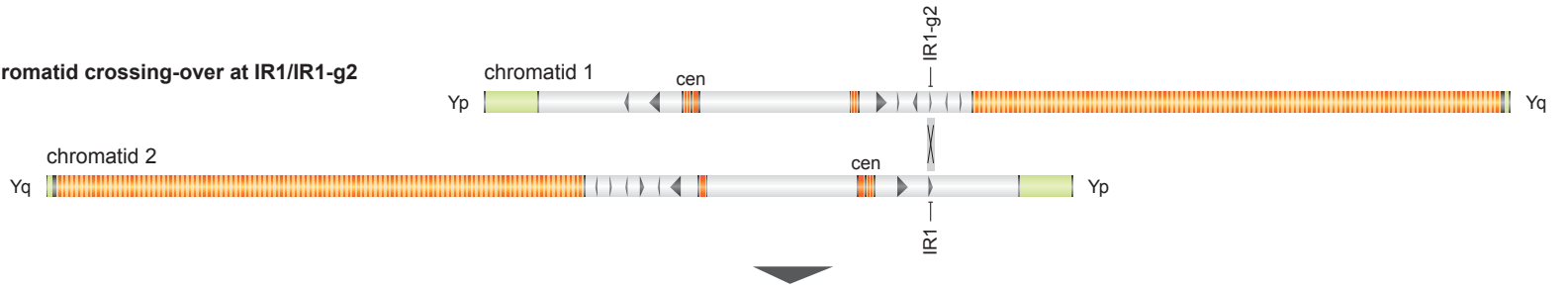
Structure of AZFc

b2/b3 inversion

pDP1335
 RP11-199M2
 17224/17225
 17228/17229
 RP11-516H8
 RP11-363G6
 18E8
 RP11-79J10
 RP11-363G6 + 18E8

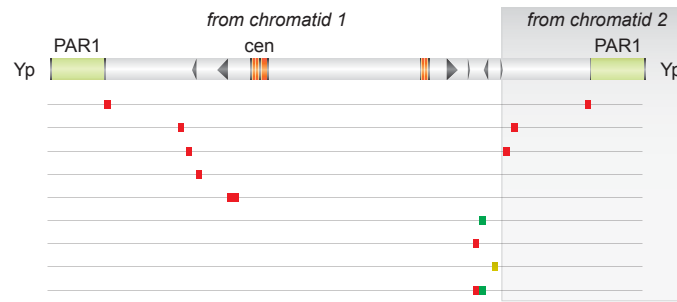


Sister-chromatid crossing-over at IR1/IR1-g2



Pseudoisoy chromosome

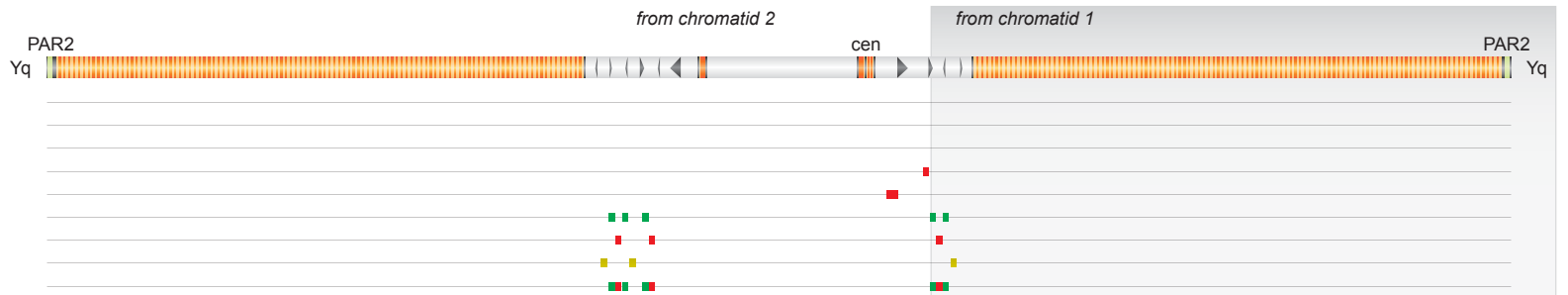
pDP1335
 RP11-199M2
 17224/17225
 17228/17229
 RP11-516H8
 RP11-363G6
 18E8
 RP11-79J10
 RP11-363G6 + 18E8



+

Pseudoisoy chromosome

pDP1335
 RP11-199M2
 17224/17225
 17228/17229
 RP11-516H8
 RP11-363G6
 18E8
 RP11-79J10
 RP11-363G6 + 18E8



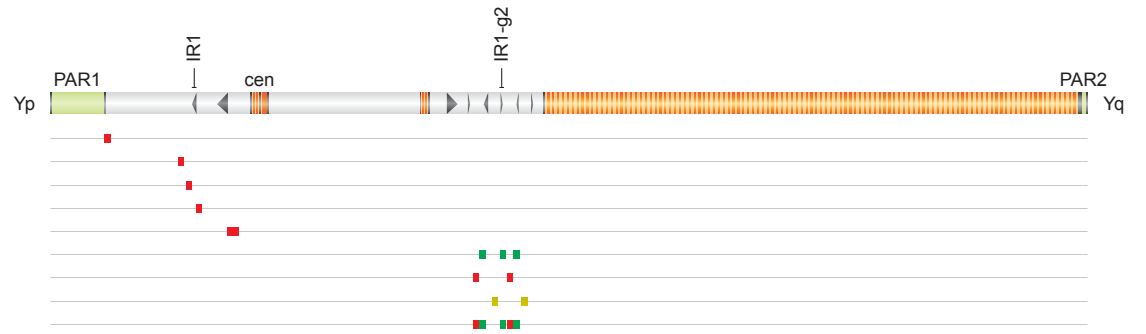
F ii Structure of IR3/IR3

Reference IR3/IR3

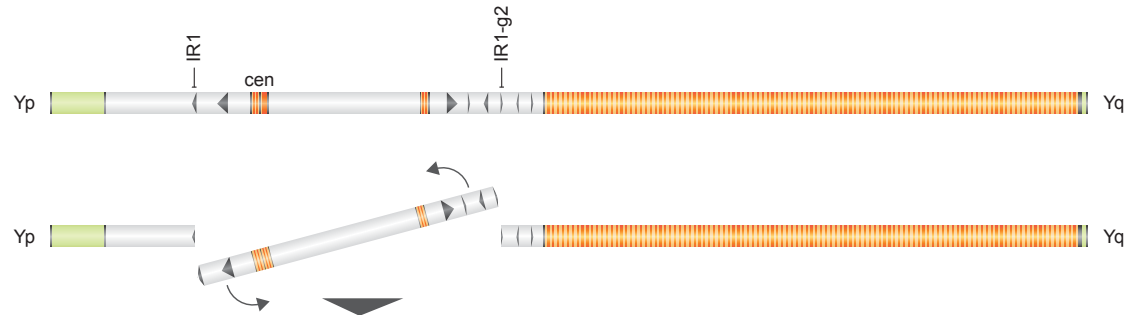
Structure of AZFc

b2/b3 inversion

pDP1335
 RP11-199M2
 17224/17225
 17228/17229
 RP11-516H8
 RP11-363G6
 18E8
 RP11-79J10
 RP11-363G6 + 18E8

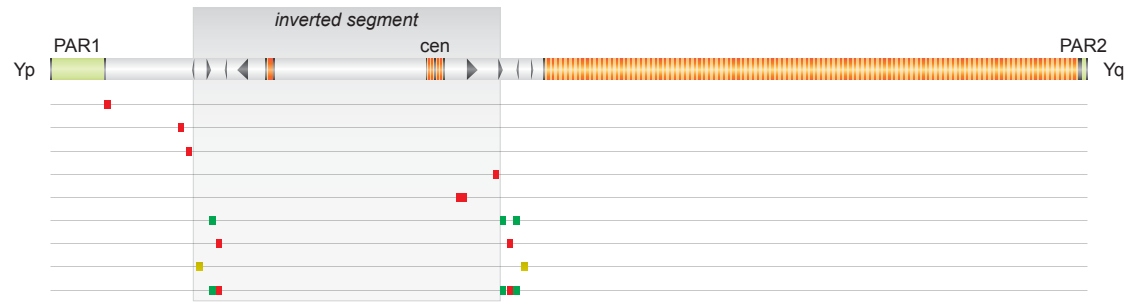


Intrachromatid crossing-over at IR1/IR1-g2



Pericentric inversion

pDP1335
 RP11-199M2
 17224/17225
 17228/17229
 RP11-516H8
 RP11-363G6
 18E8
 RP11-79J10
 RP11-363G6 + 18E8



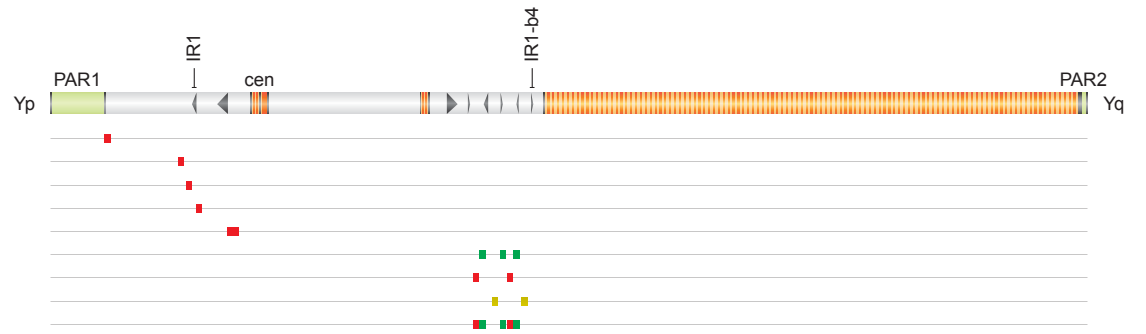
G i Structure of IR3/IR3

Reference IR3/IR3

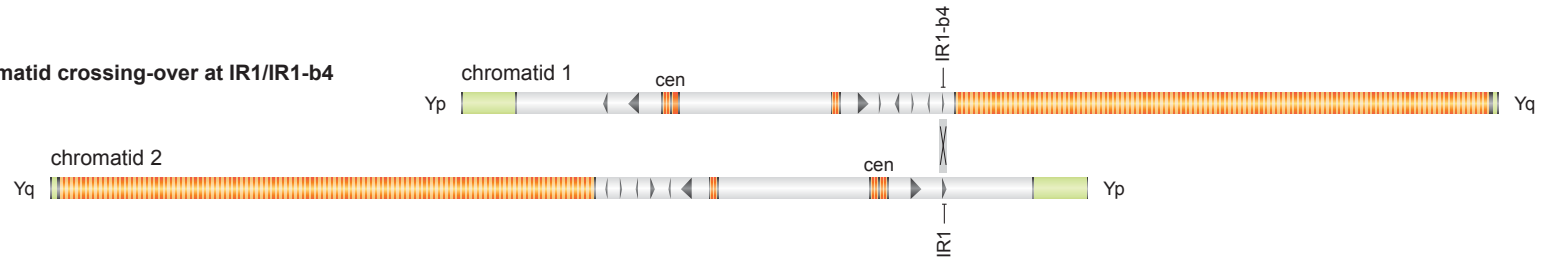
Structure of AZFc

b2/b3 inversion

pDP1335
 RP11-199M2
 17224/17225
 17228/17229
 RP11-516H8
 RP11-363G6
 18E8
 RP11-79J10
 RP11-363G6 + 18E8

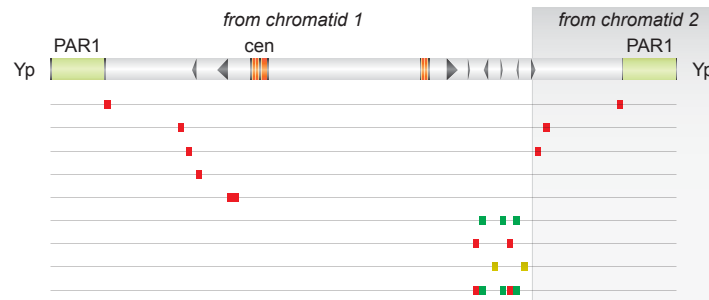


Sister-chromatid crossing-over at IR1/IR1-b4



Pseudoisoy chromosome

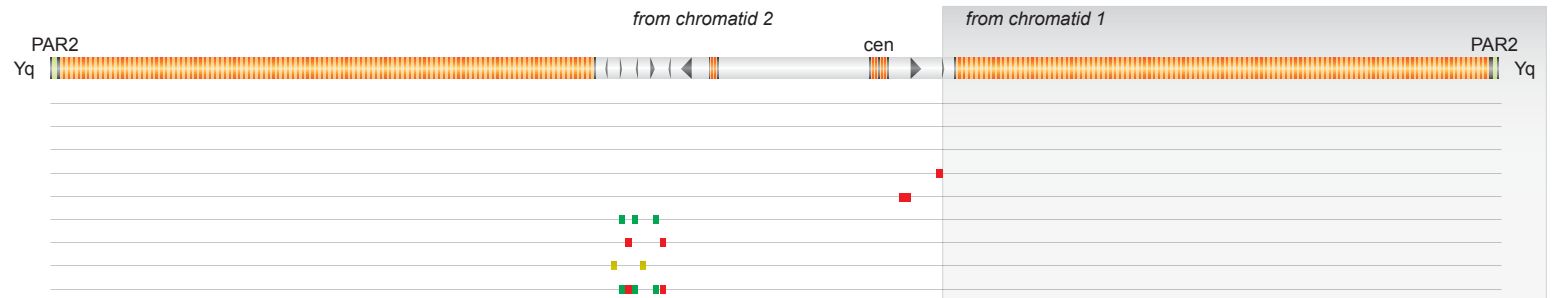
pDP1335
 RP11-199M2
 17224/17225
 17228/17229
 RP11-516H8
 RP11-363G6
 18E8
 RP11-79J10
 RP11-363G6 + 18E8



+

Pseudoisoy chromosome

pDP1335
 RP11-199M2
 17224/17225
 17228/17229
 RP11-516H8
 RP11-363G6
 18E8
 RP11-79J10
 RP11-363G6 + 18E8



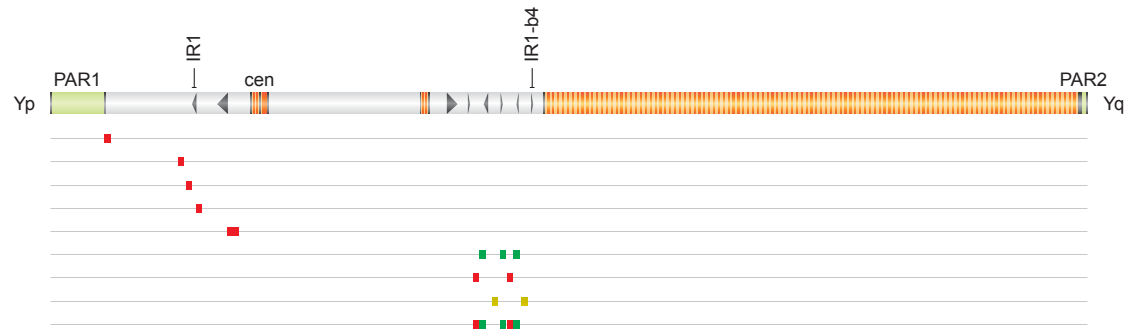
G ii Structure of IR3/IR3

Reference IR3/IR3

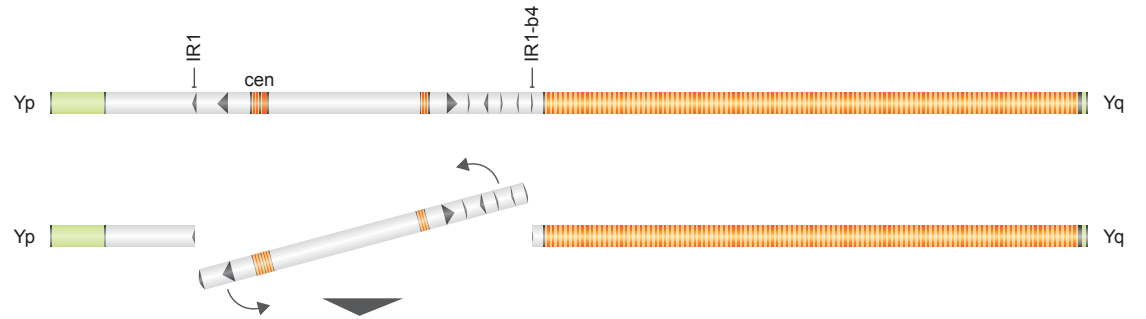
Structure of AZFc

b2/b3 inversion

pDP1335
 RP11-199M2
 17224/17225
 17228/17229
 RP11-516H8
 RP11-363G6
 18E8
 RP11-79J10
 RP11-363G6 + 18E8

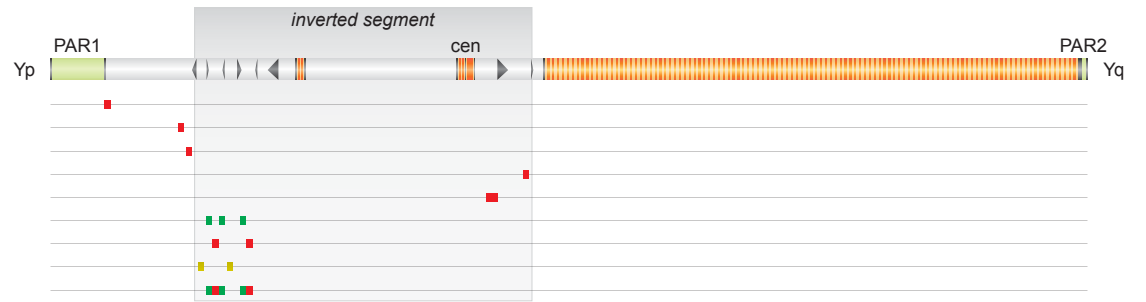


Intrachromatid crossing-over at IR1/IR1-b4



Pericentric inversion

pDP1335
 RP11-199M2
 17224/17225
 17228/17229
 RP11-516H8
 RP11-363G6
 18E8
 RP11-79J10
 RP11-363G6 + 18E8



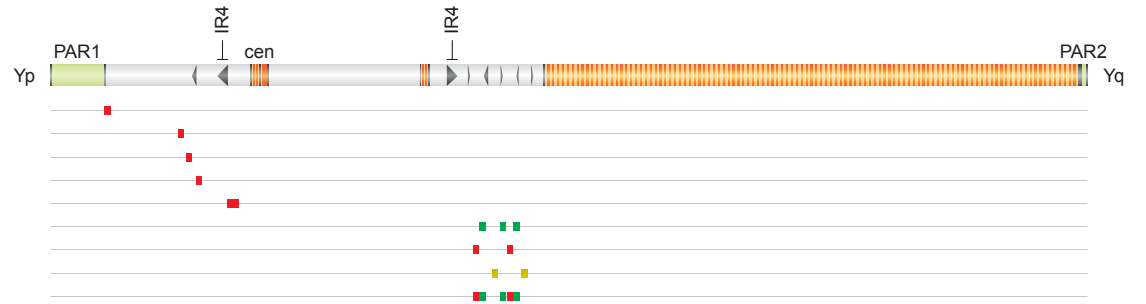
H i Structure of IR3/IR3

Reference IR3/IR3

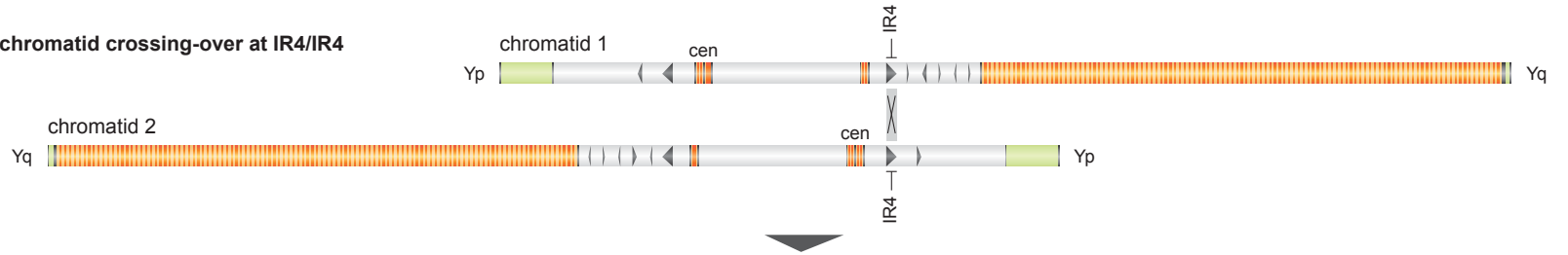
Structure of AZFc

b2/b3 inversion

pDP1335
 RP11-199M2
 17224/17225
 17228/17229
 RP11-516H8
 RP11-363G6
 18E8
 RP11-79J10
 RP11-363G6 + 18E8

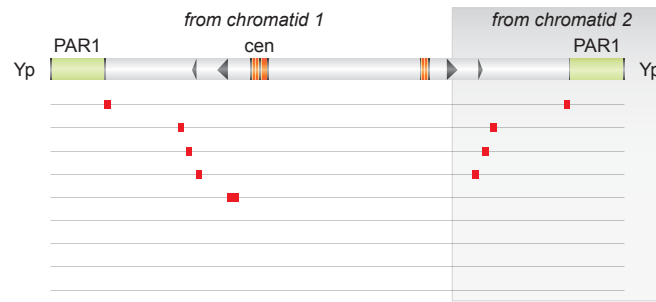


Sister-chromatid crossing-over at IR4/IR4



PseudoisoYp chromosome

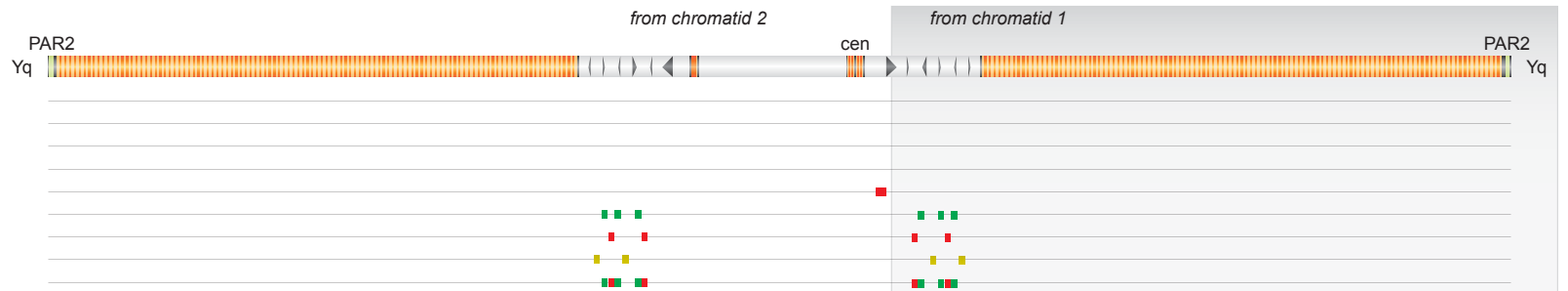
pDP1335
 RP11-199M2
 17224/17225
 17228/17229
 RP11-516H8
 RP11-363G6
 18E8
 RP11-79J10
 RP11-363G6 + 18E8



+

PseudoisoYq chromosome

pDP1335
 RP11-199M2
 17224/17225
 17228/17229
 RP11-516H8
 RP11-363G6
 18E8
 RP11-79J10
 RP11-363G6 + 18E8



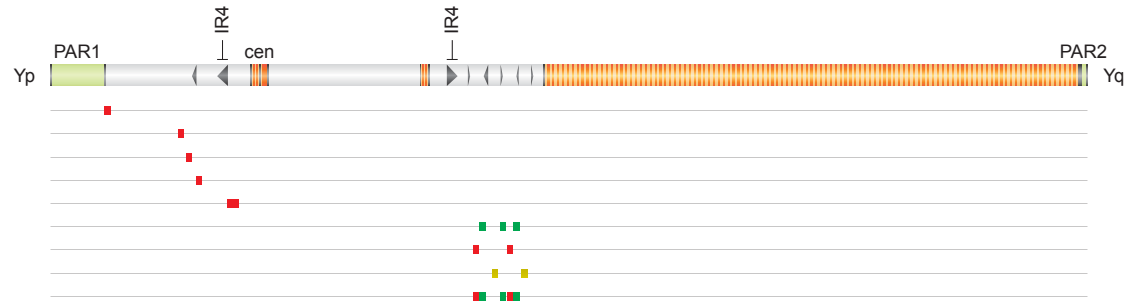
H ii Structure of IR3/IR3

Reference IR3/IR3

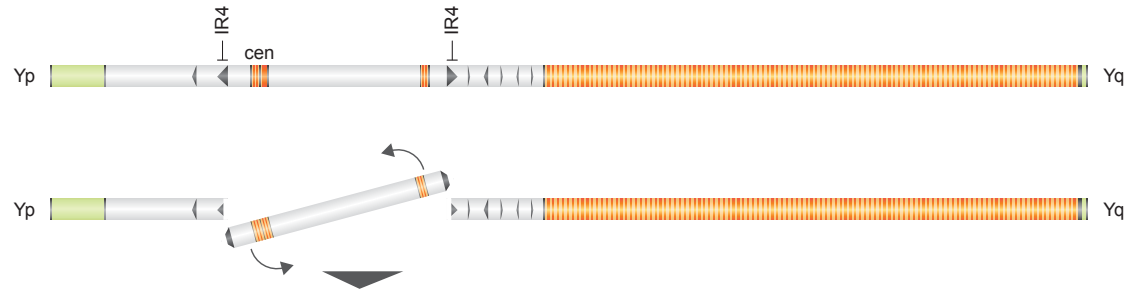
Structure of AZFc

b2/b3 inversion

pDP1335
 RP11-199M2
 17224/17225
 17228/17229
 RP11-516H8
 RP11-363G6
 18E8
 RP11-79J10
 RP11-363G6 + 18E8

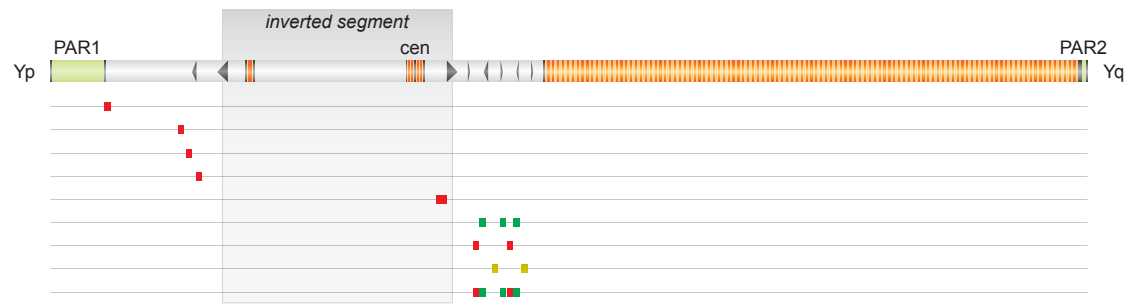


Intrachromatid crossing-over at IR4/IR4



Pericentric inversion

pDP1335
 RP11-199M2
 17224/17225
 17228/17229
 RP11-516H8
 RP11-363G6
 18E8
 RP11-79J10
 RP11-363G6 + 18E8



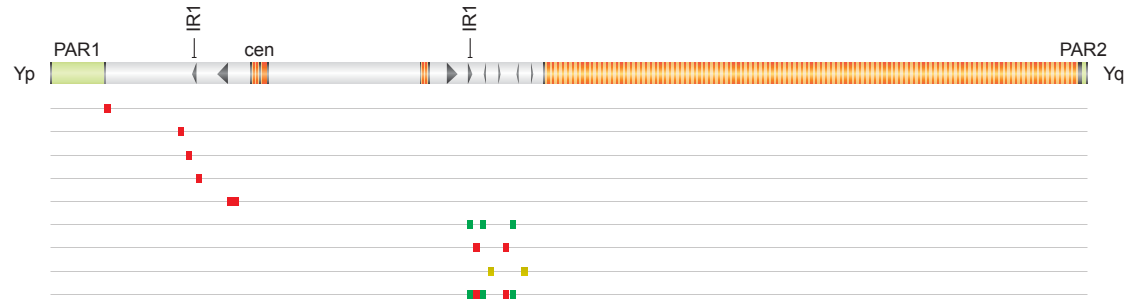
I i Structure of IR3/IR3

Reference IR3/IR3

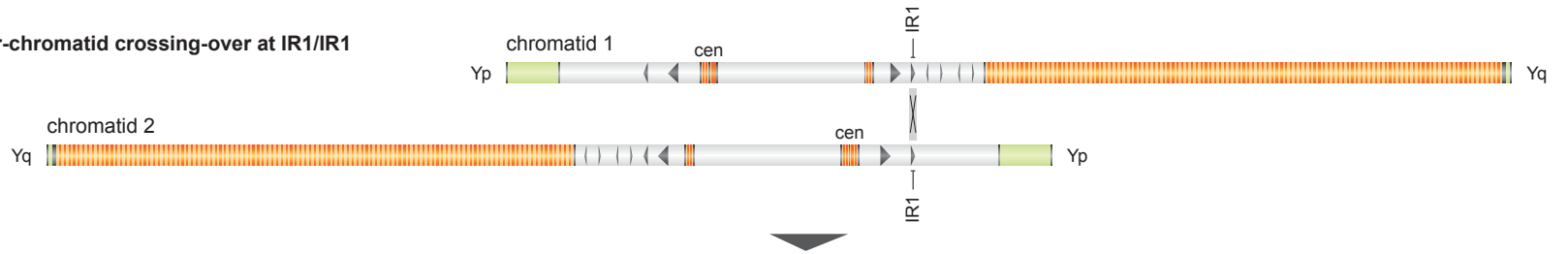
Structure of AZFc

gr/rg inversion

pDP1335
 RP11-199M2
 17224/17225
 17228/17229
 RP11-516H8
 RP11-363G6
 18E8
 RP11-79J10
 RP11-363G6 + 18E8

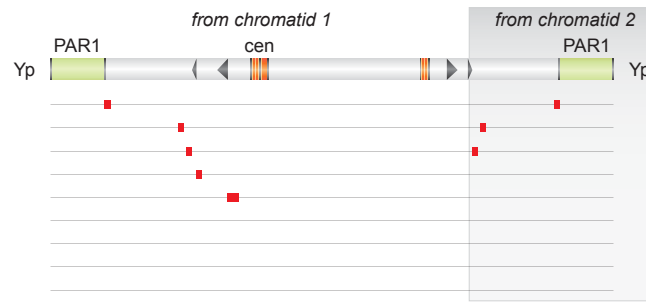


Sister-chromatid crossing-over at IR1/IR1



PseudoisoYp chromosome

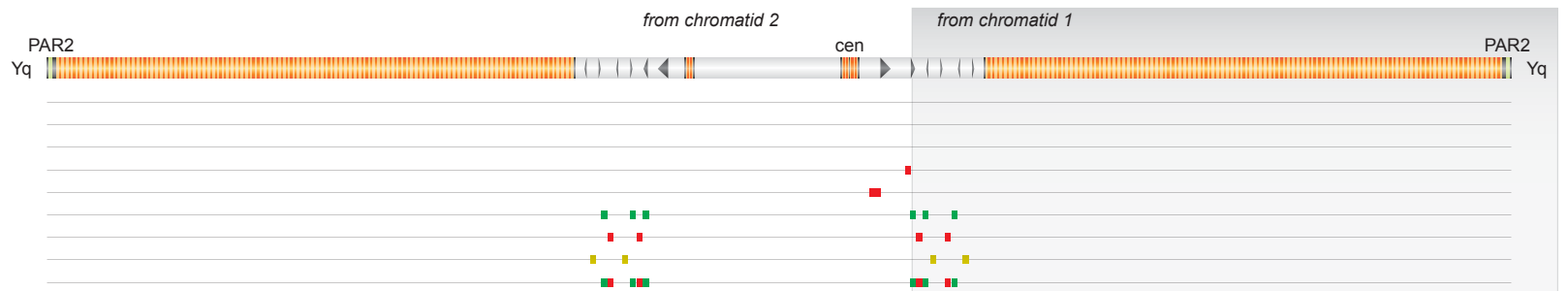
pDP1335
 RP11-199M2
 17224/17225
 17228/17229
 RP11-516H8
 RP11-363G6
 18E8
 RP11-79J10
 RP11-363G6 + 18E8



+

PseudoisoYq chromosome

pDP1335
 RP11-199M2
 17224/17225
 17228/17229
 RP11-516H8
 RP11-363G6
 18E8
 RP11-79J10
 RP11-363G6 + 18E8



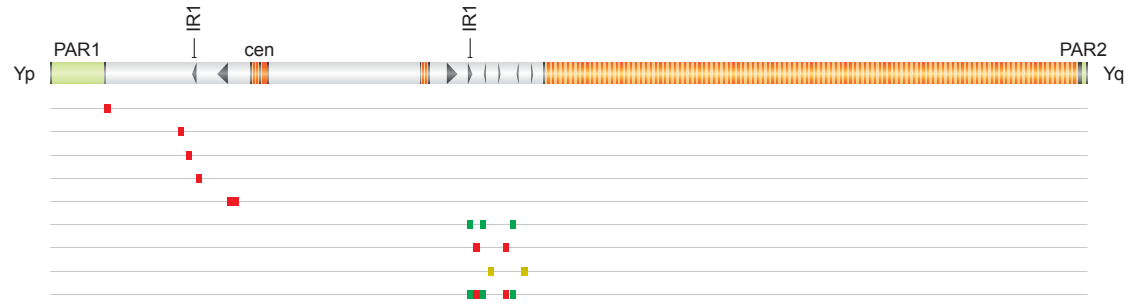
I ii Structure of IR3/IR3

Reference IR3/IR3

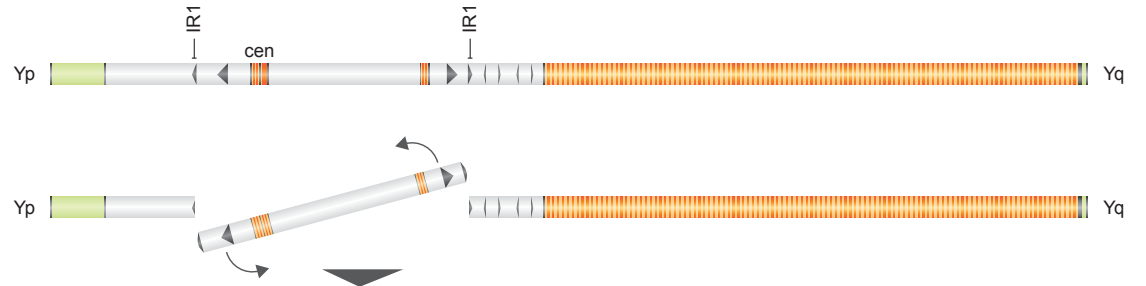
Structure of AZFc

gr/rg inversion

pDP1335
 RP11-199M2
 17224/17225
 17228/17229
 RP11-516H8
 RP11-363G6
 18E8
 RP11-79J10
 RP11-363G6 + 18E8

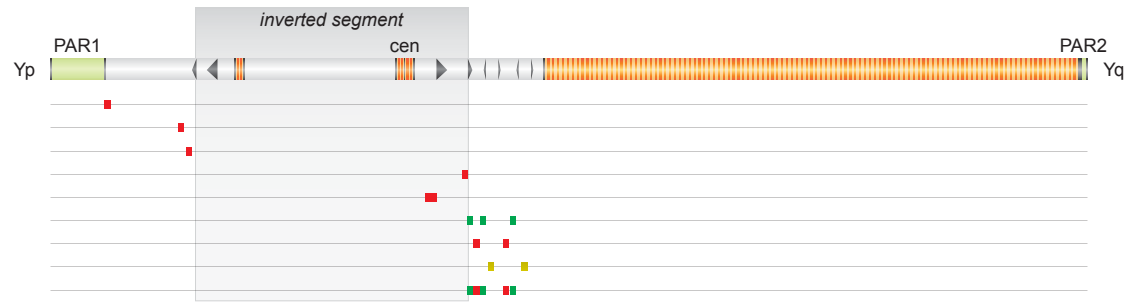


Intrachromatid crossing-over at IR1/IR1



Pericentric inversion

pDP1335
 RP11-199M2
 17224/17225
 17228/17229
 RP11-516H8
 RP11-363G6
 18E8
 RP11-79J10
 RP11-363G6 + 18E8



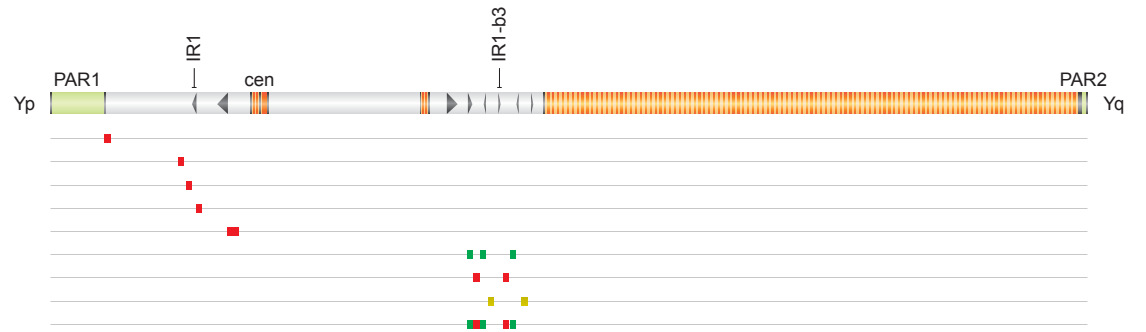
J i Structure of IR3/IR3

Reference IR3/IR3

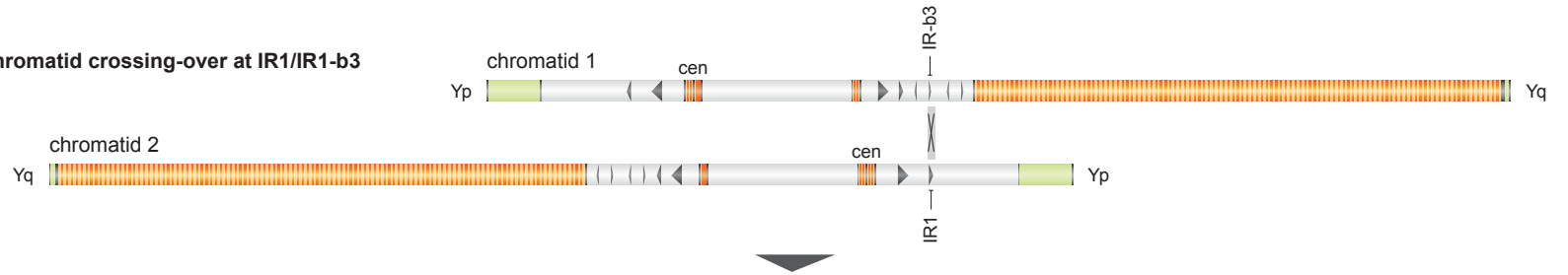
Structure of AZFc

gr/rg inversion

pDP1335
 RP11-199M2
 17224/17225
 17228/17229
 RP11-516H8
 RP11-363G6
 18E8
 RP11-79J10
 RP11-363G6 + 18E8

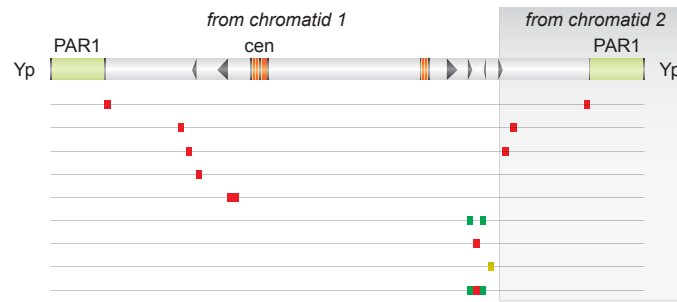


Sister-chromatid crossing-over at IR1/IR1-b3



PseudoisoYp chromosome

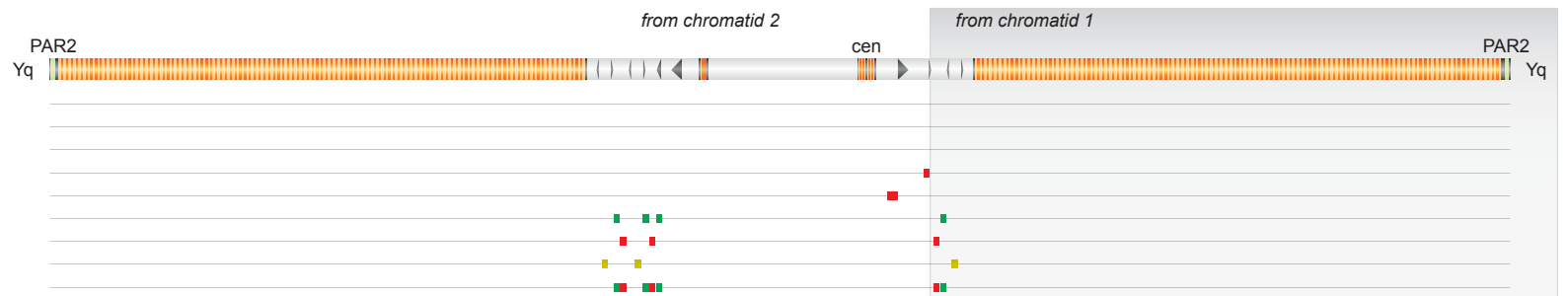
pDP1335
 RP11-199M2
 17224/17225
 17228/17229
 RP11-516H8
 RP11-363G6
 18E8
 RP11-79J10
 RP11-363G6 + 18E8



+

PseudoisoYq chromosome

pDP1335
 RP11-199M2
 17224/17225
 17228/17229
 RP11-516H8
 RP11-363G6
 18E8
 RP11-79J10
 RP11-363G6 + 18E8



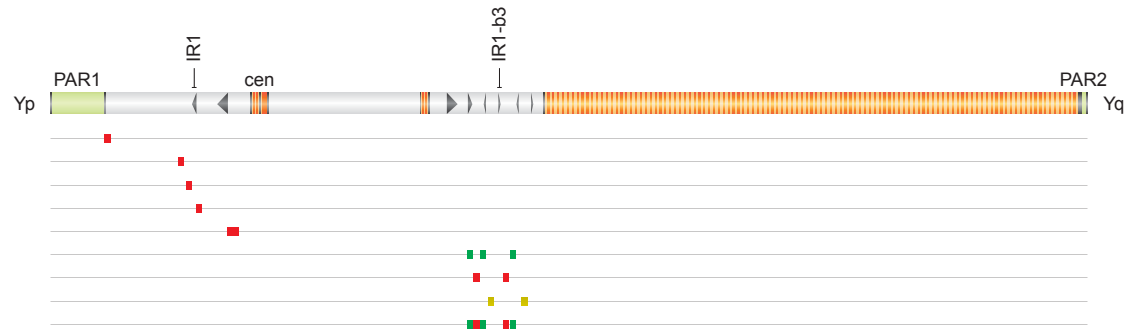
J ii Structure of IR3/IR3

Reference IR3/IR3

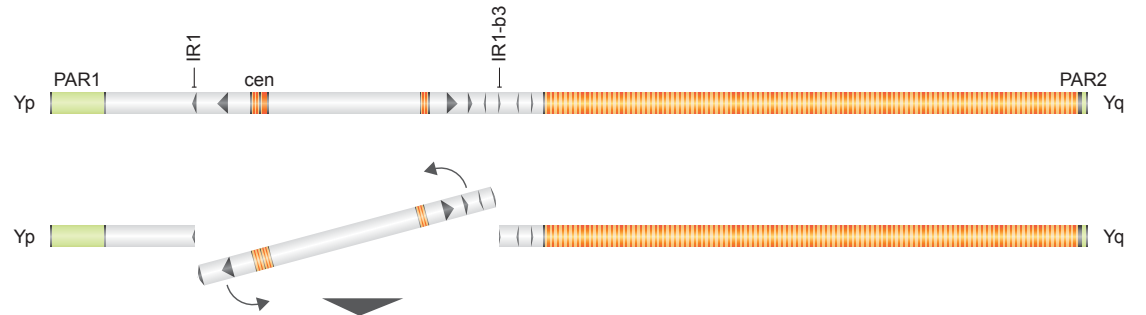
Structure of AZFc

gr/rg inversion

pDP1335
 RP11-199M2
 17224/17225
 17228/17229
 RP11-516H8
 RP11-363G6
 18E8
 RP11-79J10
 RP11-363G6 + 18E8

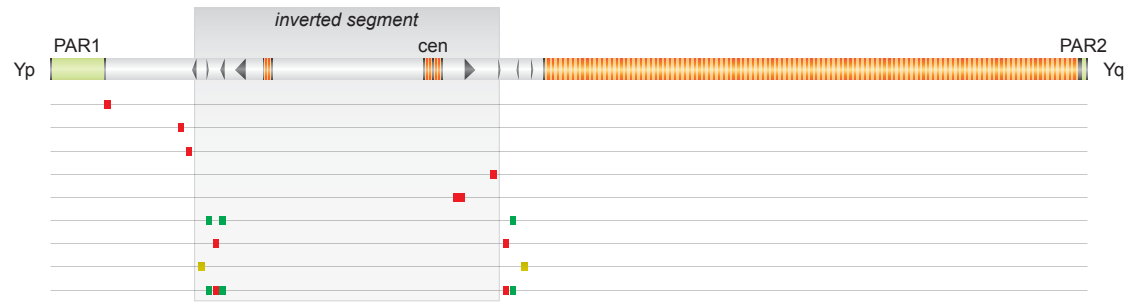


Intrachromatid crossing-over at IR1/IR1-b3



Pericentric inversion

pDP1335
 RP11-199M2
 17224/17225
 17228/17229
 RP11-516H8
 RP11-363G6
 18E8
 RP11-79J10
 RP11-363G6 + 18E8



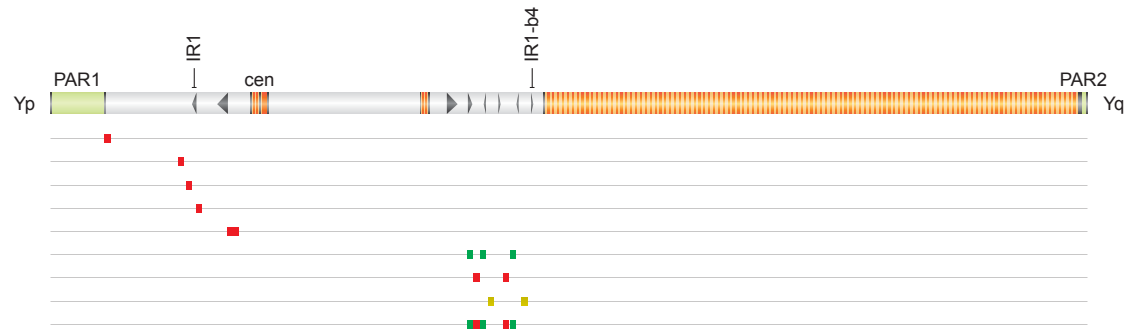
K i Structure of IR3/IR3

Reference IR3/IR3

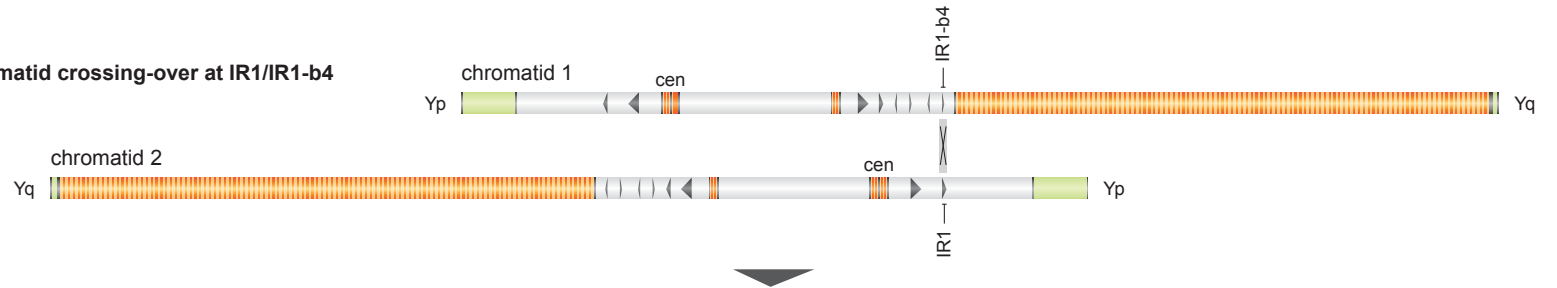
Structure of AZFc

gr/rg inversion

pDP1335
 RP11-199M2
 17224/17225
 17228/17229
 RP11-516H8
 RP11-363G6
 18E8
 RP11-79J10
 RP11-363G6 + 18E8

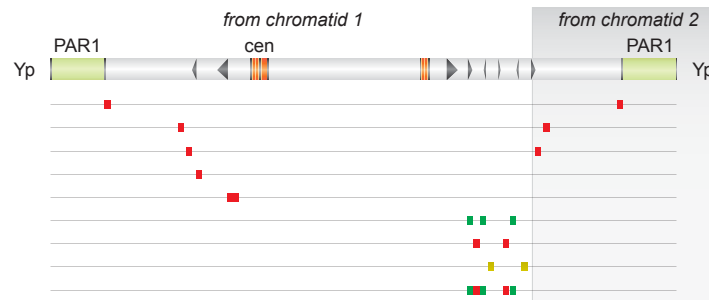


Sister-chromatid crossing-over at IR1/IR1-b4



Pseudoisoy chromosome

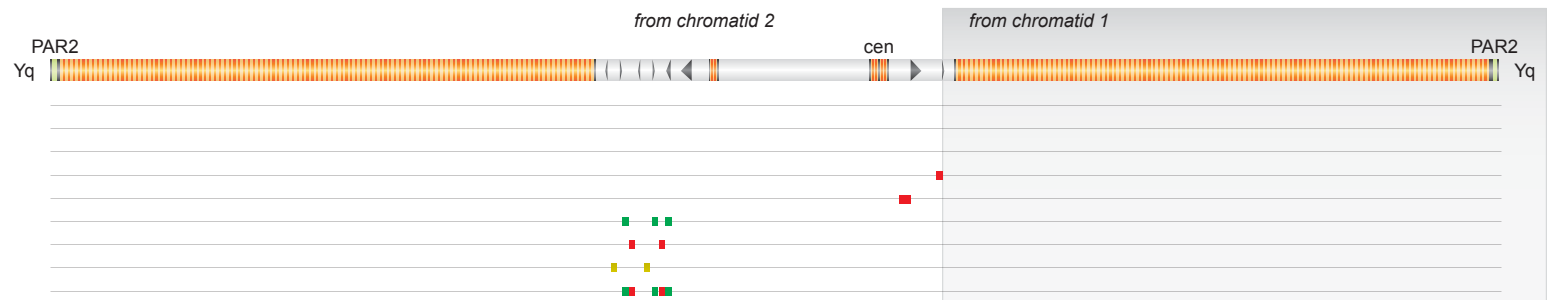
pDP1335
 RP11-199M2
 17224/17225
 17228/17229
 RP11-516H8
 RP11-363G6
 18E8
 RP11-79J10
 RP11-363G6 + 18E8



+

Pseudoisoy chromosome

pDP1335
 RP11-199M2
 17224/17225
 17228/17229
 RP11-516H8
 RP11-363G6
 18E8
 RP11-79J10
 RP11-363G6 + 18E8



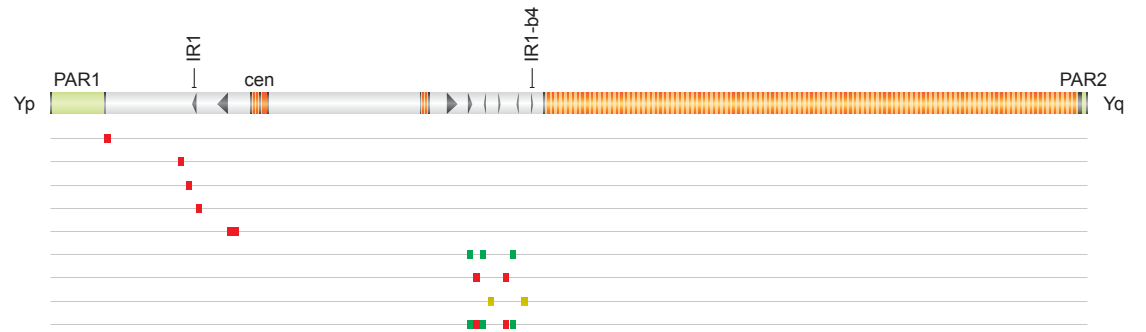
K ii Structure of IR3/IR3

Reference IR3/IR3

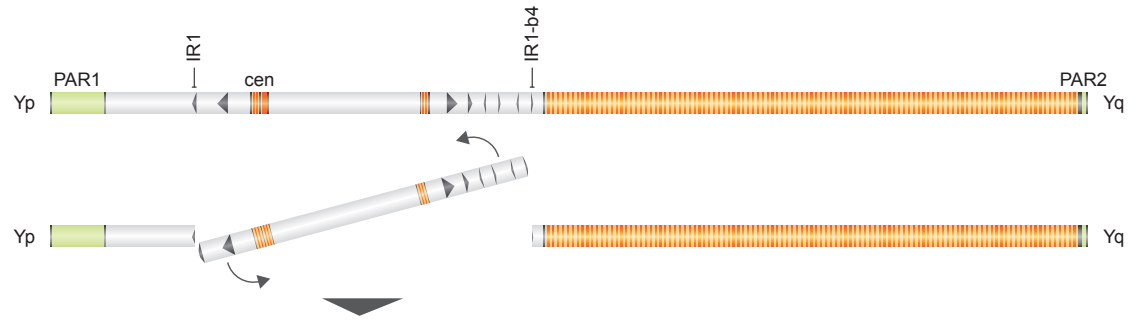
Structure of AZFc

gr/rg inversion

pDP1335
 RP11-199M2
 17224/17225
 17228/17229
 RP11-516H8
 RP11-363G6
 18E8
 RP11-79J10
 RP11-363G6 + 18E8

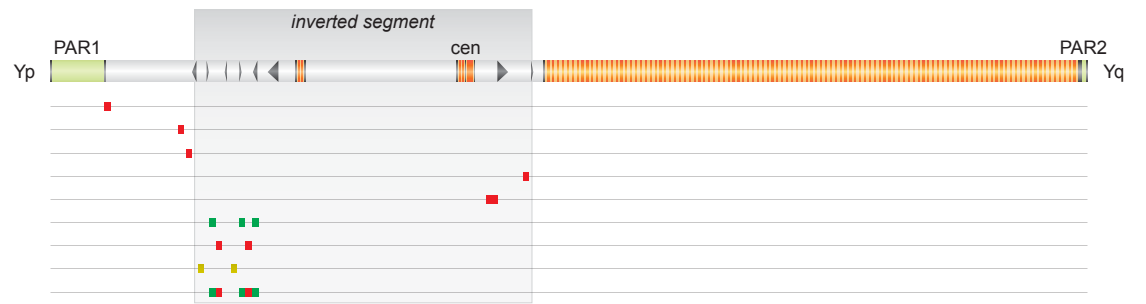


Intrachromatid crossing-over at IR1/IR1-b4



Pericentric inversion

pDP1335
 RP11-199M2
 17224/17225
 17228/17229
 RP11-516H8
 RP11-363G6
 18E8
 RP11-79J10
 RP11-363G6 + 18E8



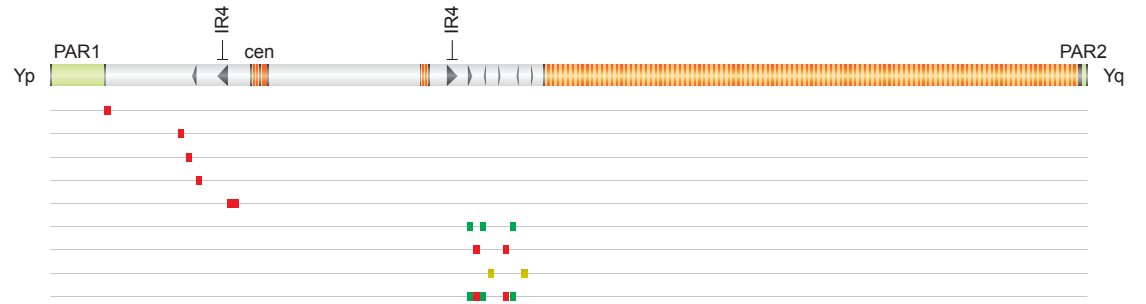
L i Structure of IR3/IR3

Reference IR3/IR3

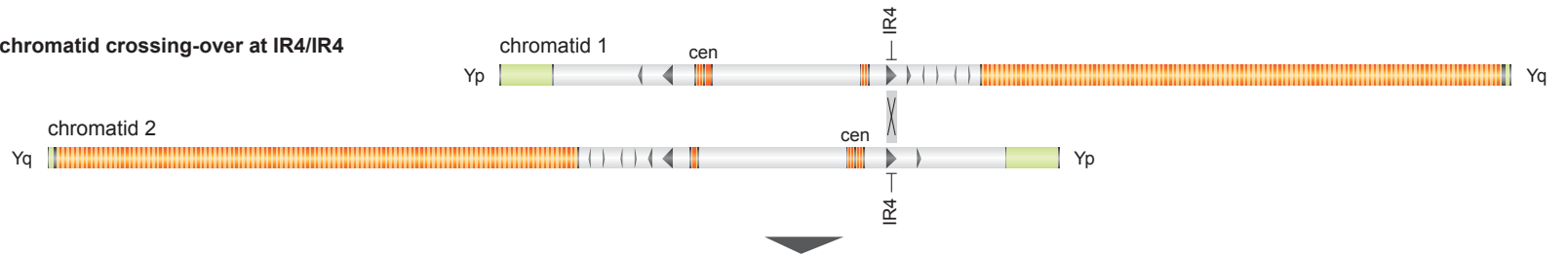
Structure of AZFc

gr/rg inversion

pDP1335
 RP11-199M2
 17224/17225
 17228/17229
 RP11-516H8
 RP11-363G6
 18E8
 RP11-79J10
 RP11-363G6 + 18E8

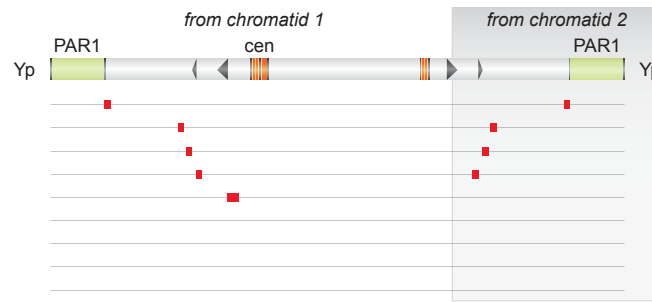


Sister-chromatid crossing-over at IR4/IR4



PseudoisoYp chromosome

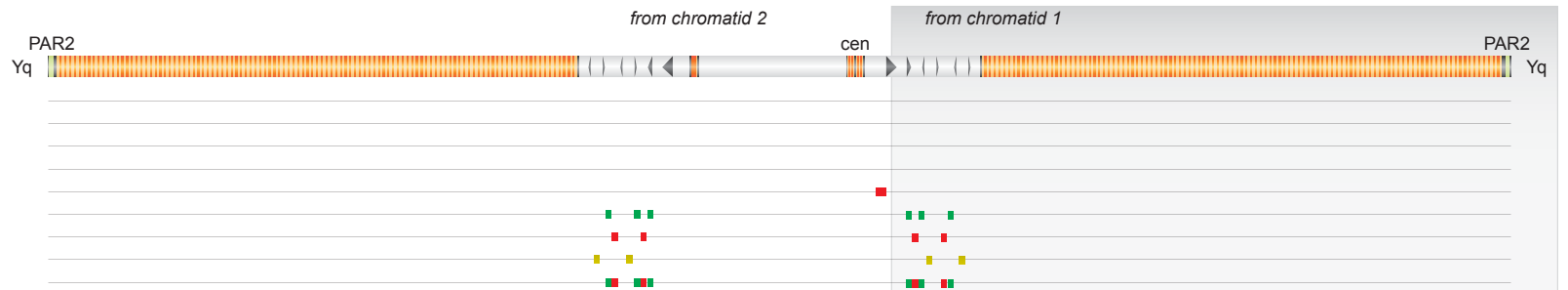
pDP1335
 RP11-199M2
 17224/17225
 17228/17229
 RP11-516H8
 RP11-363G6
 18E8
 RP11-79J10
 RP11-363G6 + 18E8



+

PseudoisoYq chromosome

pDP1335
 RP11-199M2
 17224/17225
 17228/17229
 RP11-516H8
 RP11-363G6
 18E8
 RP11-79J10
 RP11-363G6 + 18E8



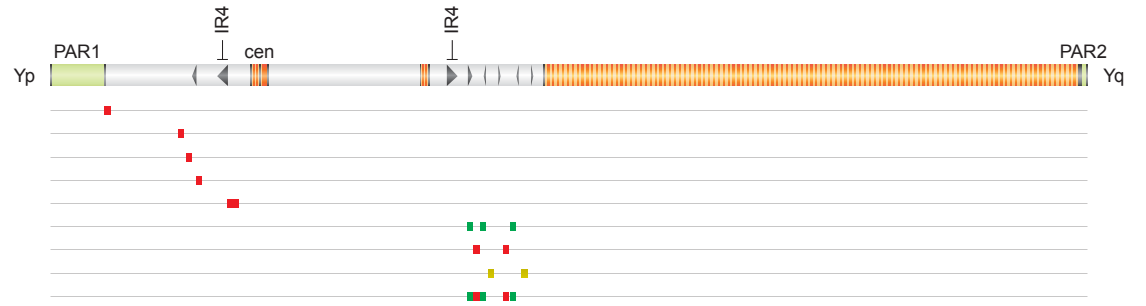
L ii Structure of IR3/IR3

Reference IR3/IR3

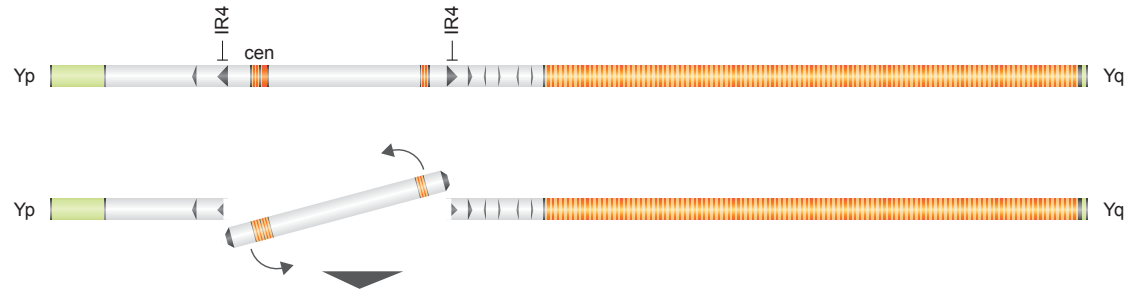
Structure of AZFc

gr/rg inversion

pDP1335
 RP11-199M2
 17224/17225
 17228/17229
 RP11-516H8
 RP11-363G6
 18E8
 RP11-79J10
 RP11-363G6 + 18E8

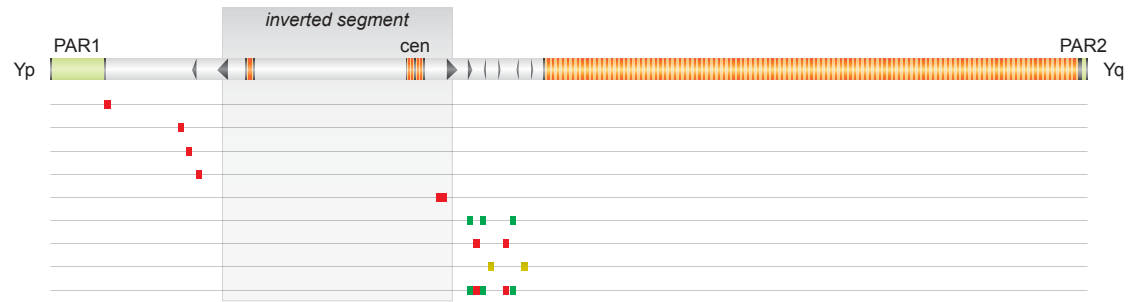


Intrachromatid crossing-over at IR4/IR4



Pericentric inversion

pDP1335
 RP11-199M2
 17224/17225
 17228/17229
 RP11-516H8
 RP11-363G6
 18E8
 RP11-79J10
 RP11-363G6 + 18E8



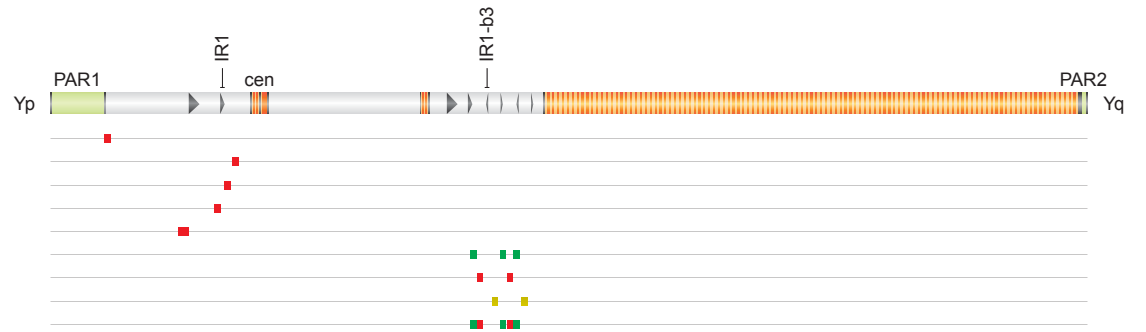
M i Structure of IR3/IR3

IR3/IR3 inversion

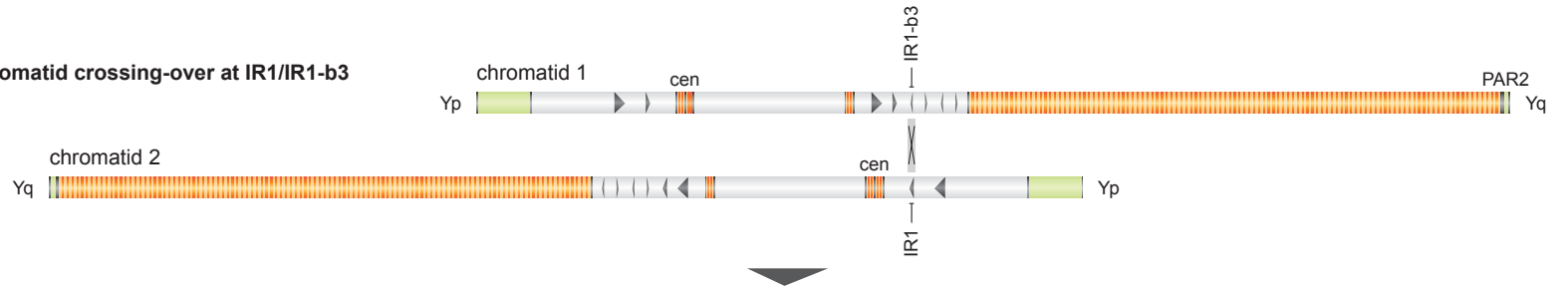
Structure of AZFc

Reference AZFc

pDP1335
 RP11-199M2
 17224/17225
 17228/17229
 RP11-516H8
 RP11-363G6
 18E8
 RP11-79J10
 RP11-363G6 + 18E8

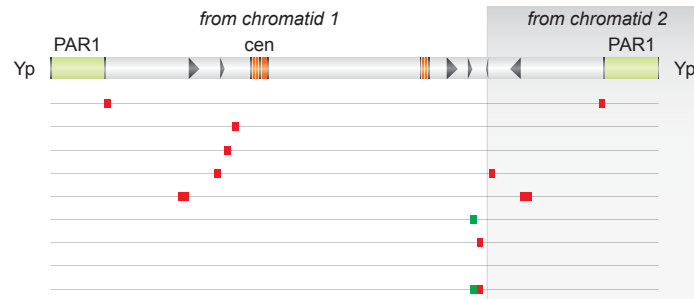


Sister-chromatid crossing-over at IR1/IR1-b3



Pseudoisoy chromosome

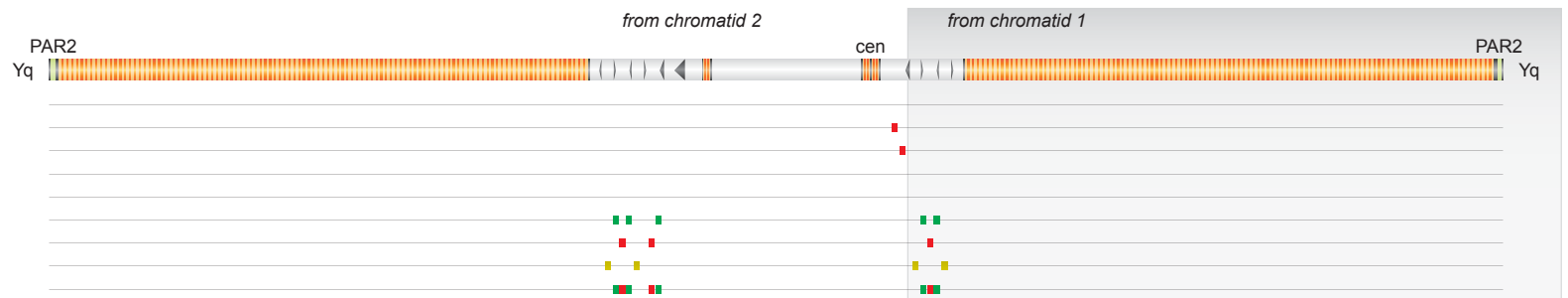
pDP1335
 RP11-199M2
 17224/17225
 17228/17229
 RP11-516H8
 RP11-363G6
 18E8
 RP11-79J10
 RP11-363G6 + 18E8



+

Pseudoisoy chromosome

pDP1335
 RP11-199M2
 17224/17225
 17228/17229
 RP11-516H8
 RP11-363G6
 18E8
 RP11-79J10
 RP11-363G6 + 18E8



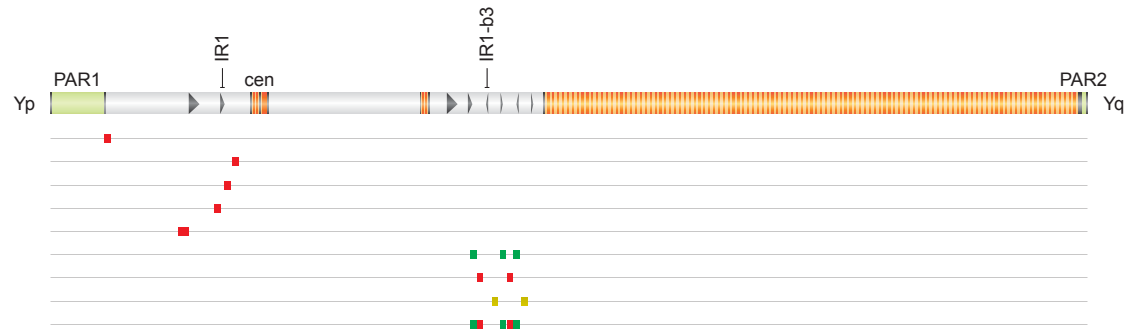
M ii Structure of IR3/IR3

IR3/IR3 inversion

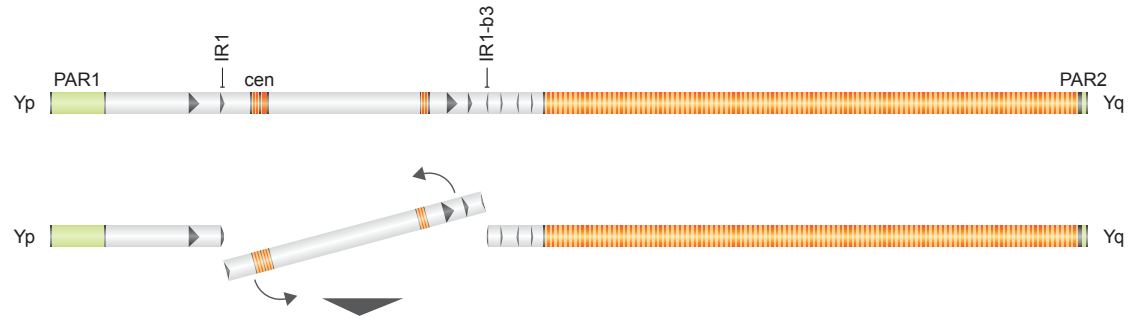
Structure of AZFc

Reference AZFc

pDP1335
 RP11-199M2
 17224/17225
 17228/17229
 RP11-516H8
 RP11-363G6
 18E8
 RP11-79J10
 RP11-363G6 + 18E8

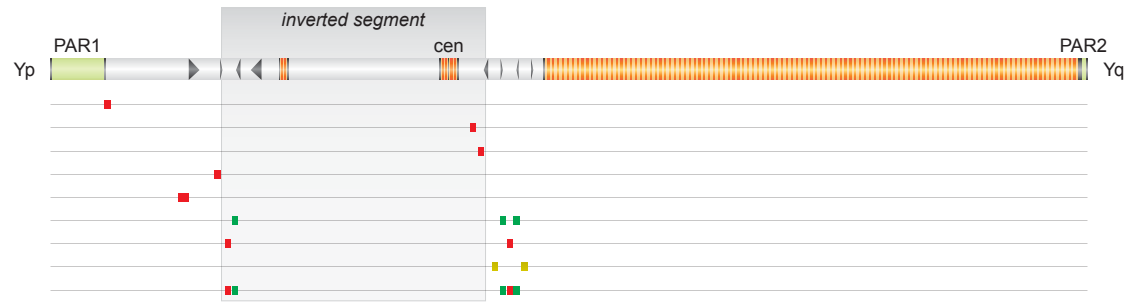


Intrachromatid crossing-over at IR1/IR1-b3



Pericentric inversion

pDP1335
 RP11-199M2
 17224/17225
 17228/17229
 RP11-516H8
 RP11-363G6
 18E8
 RP11-79J10
 RP11-363G6 + 18E8



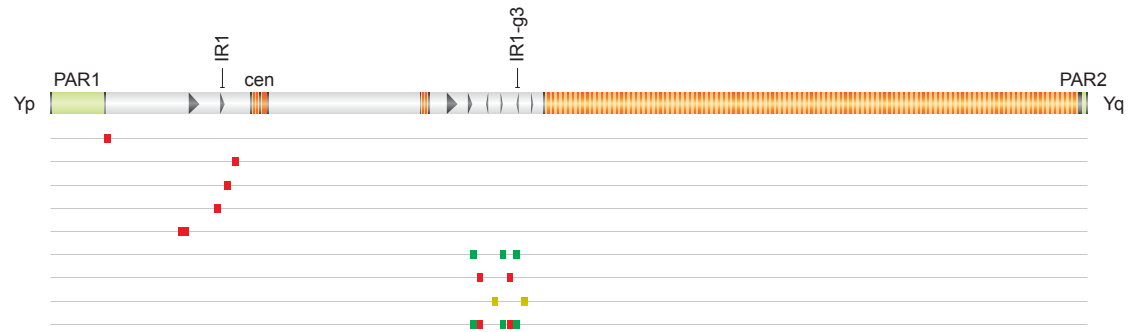
N i Structure of IR3/IR3

IR3/IR3 inversion

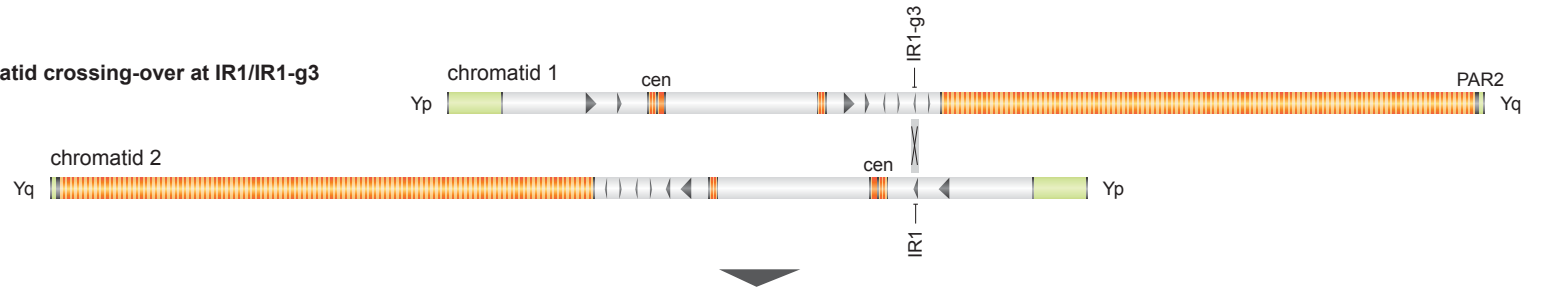
Structure of AZFc

Reference AZFc

pDP1335
 RP11-199M2
 17224/17225
 17228/17229
 RP11-516H8
 RP11-363G6
 18E8
 RP11-79J10
 RP11-363G6 + 18E8

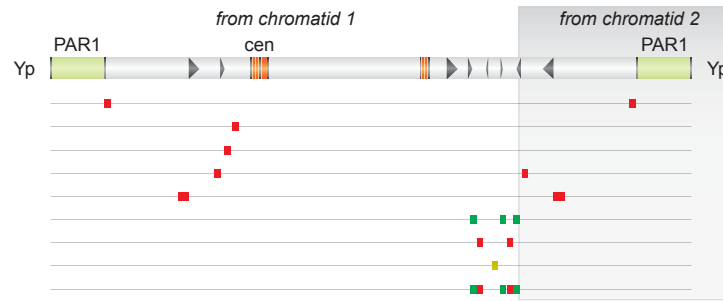


Sister-chromatid crossing-over at IR1/IR1-g3



Pseudoisoy chromosome

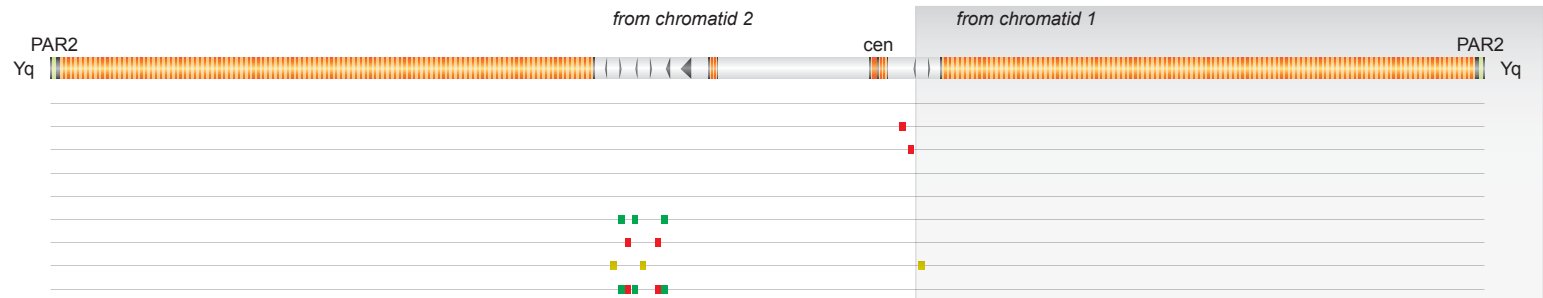
pDP1335
 RP11-199M2
 17224/17225
 17228/17229
 RP11-516H8
 RP11-363G6
 18E8
 RP11-79J10
 RP11-363G6 + 18E8



+

Pseudoisoy chromosome

pDP1335
 RP11-199M2
 17224/17225
 17228/17229
 RP11-516H8
 RP11-363G6
 18E8
 RP11-79J10
 RP11-363G6 + 18E8



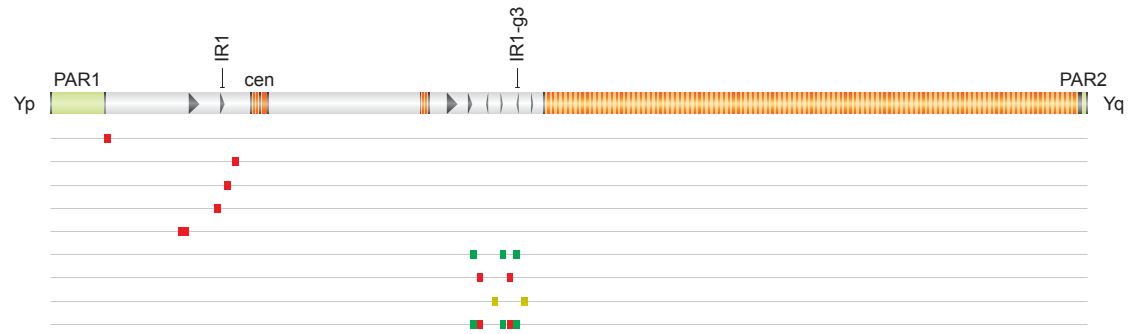
N ii **Structure of IR3/IR3**

IR3/IR3 inversion

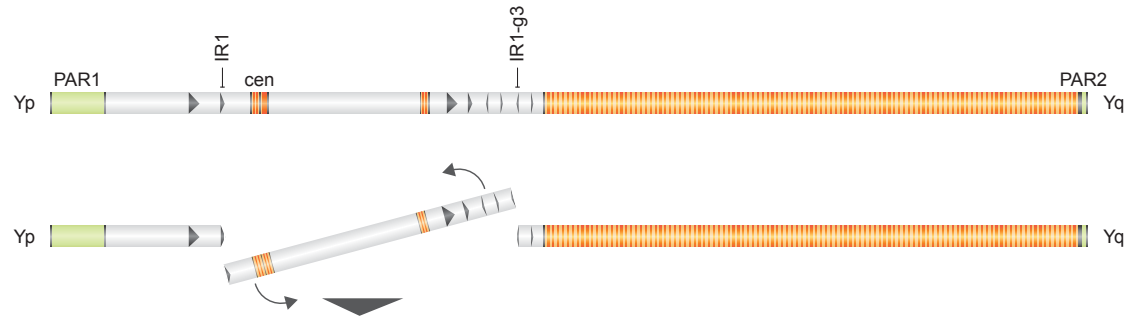
Structure of AZFc

Reference AZFc

pDP1335
 RP11-199M2
 17224/17225
 17228/17229
 RP11-516H8
 RP11-363G6
 18E8
 RP11-79J10
 RP11-363G6 + 18E8

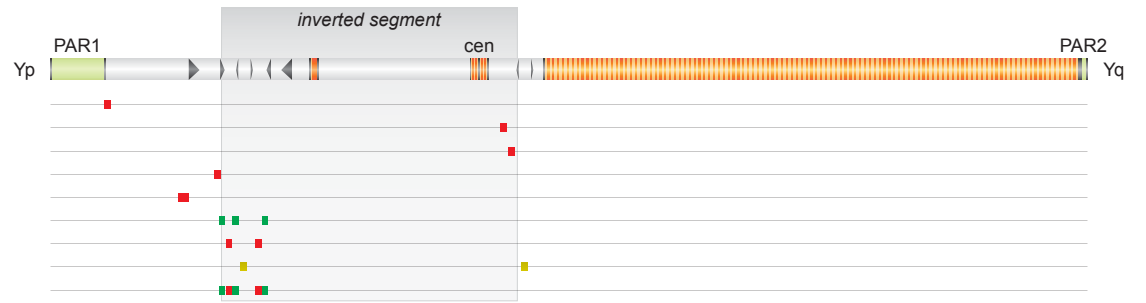


Intrachromatid crossing-over at IR1/IR1-g3



Pericentric inversion

pDP1335
 RP11-199M2
 17224/17225
 17228/17229
 RP11-516H8
 RP11-363G6
 18E8
 RP11-79J10
 RP11-363G6 + 18E8



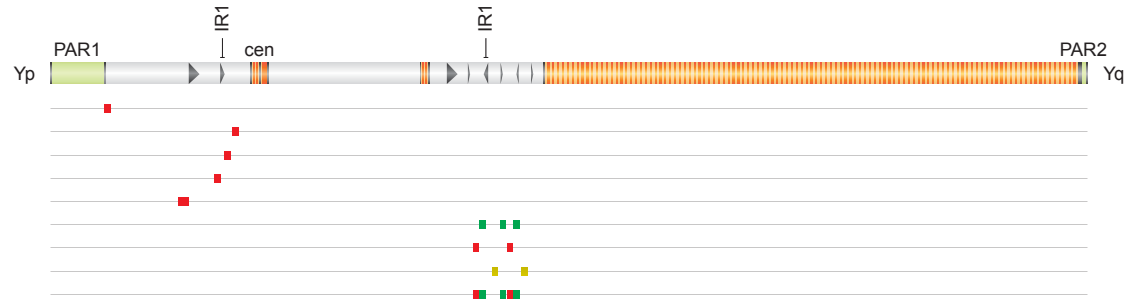
O i Structure of IR3/IR3

IR3/IR3 inversion

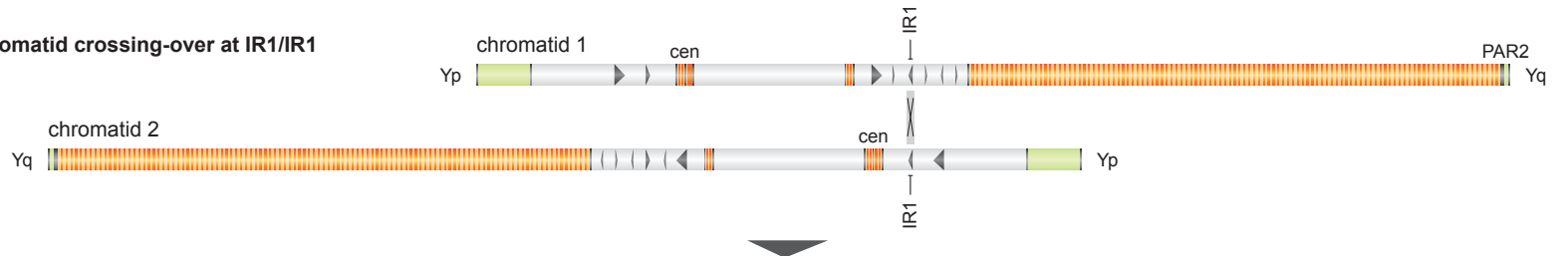
Structure of AZFc

b2/b3 inversion

pDP1335
 RP11-199M2
 17224/17225
 17228/17229
 RP11-516H8
 RP11-363G6
 18E8
 RP11-79J10
 RP11-363G6 + 18E8

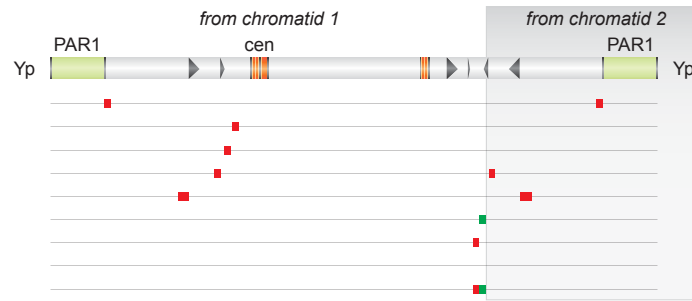


Sister-chromatid crossing-over at IR1/IR1



PseudoisoYp chromosome

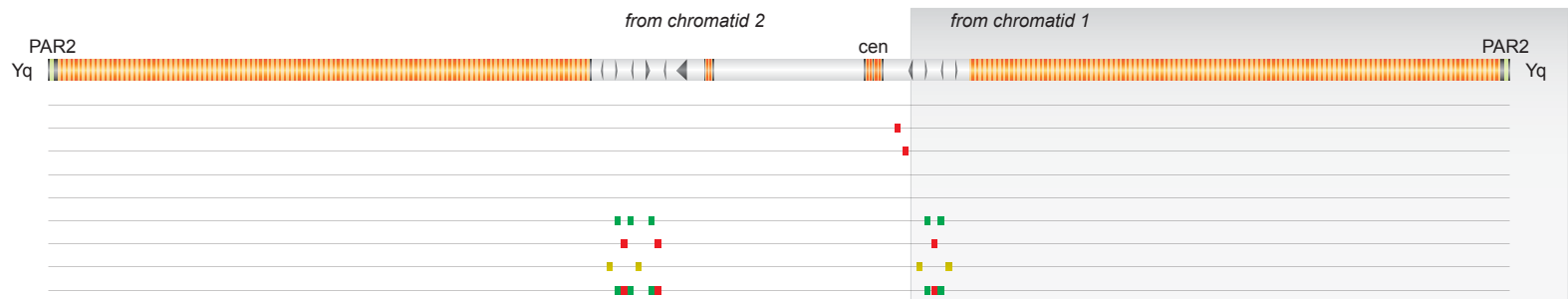
pDP1335
 RP11-199M2
 17224/17225
 17228/17229
 RP11-516H8
 RP11-363G6
 18E8
 RP11-79J10
 RP11-363G6 + 18E8



+

PseudoisoYq chromosome

pDP1335
 RP11-199M2
 17224/17225
 17228/17229
 RP11-516H8
 RP11-363G6
 18E8
 RP11-79J10
 RP11-363G6 + 18E8



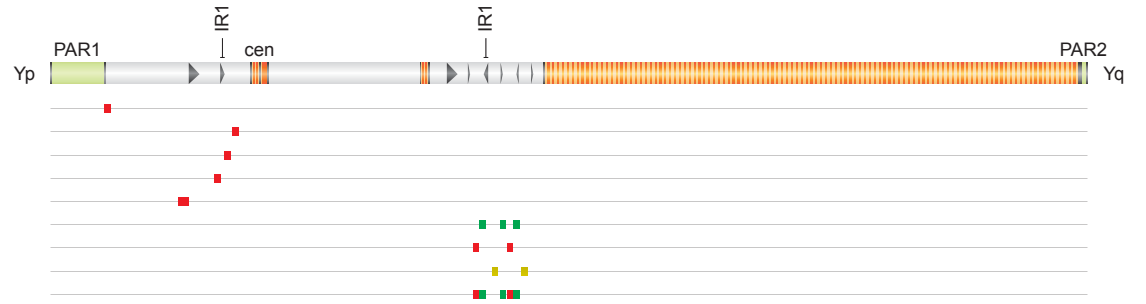
O ii Structure of IR3/IR3

IR3/IR3 inversion

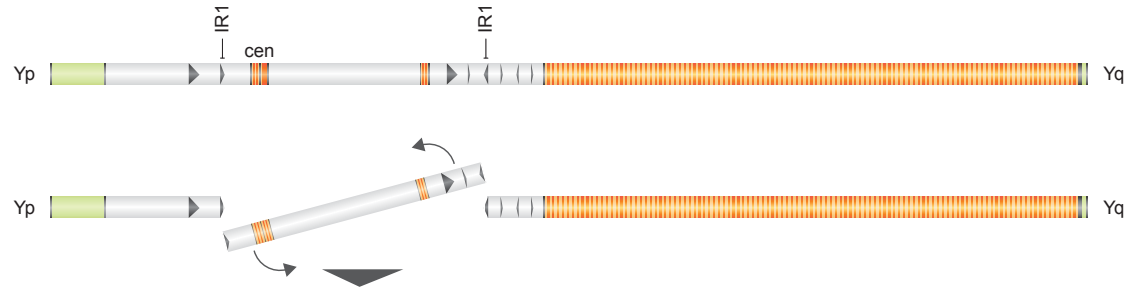
Structure of AZFc

b2/b3 inversion

pDP1335
 RP11-199M2
 17224/17225
 17228/17229
 RP11-516H8
 RP11-363G6
 18E8
 RP11-79J10
 RP11-363G6 + 18E8

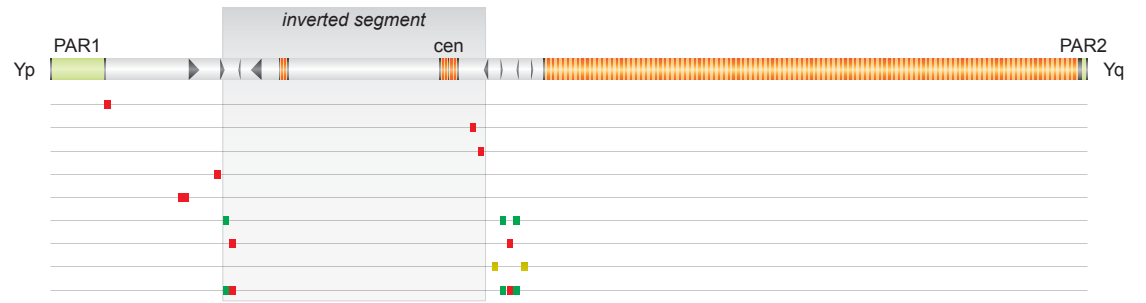


Intrachromatid crossing-over at IR1/IR1



Pericentric inversion

pDP1335
 RP11-199M2
 17224/17225
 17228/17229
 RP11-516H8
 RP11-363G6
 18E8
 RP11-79J10
 RP11-363G6 + 18E8



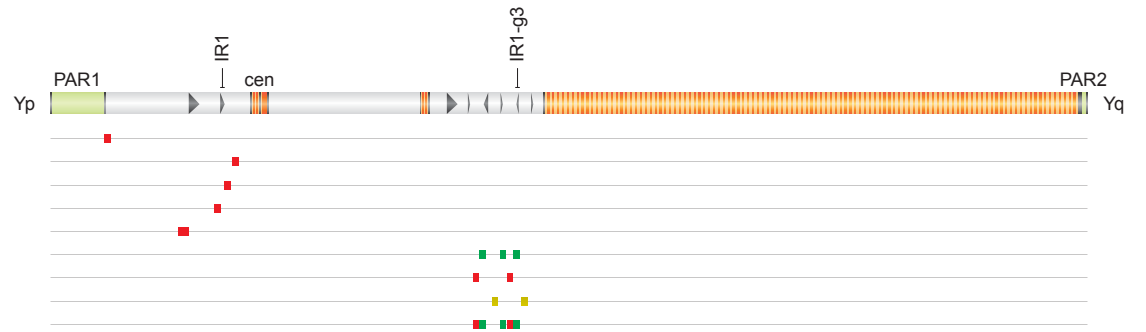
P i Structure of IR3/IR3

IR3/IR3 inversion

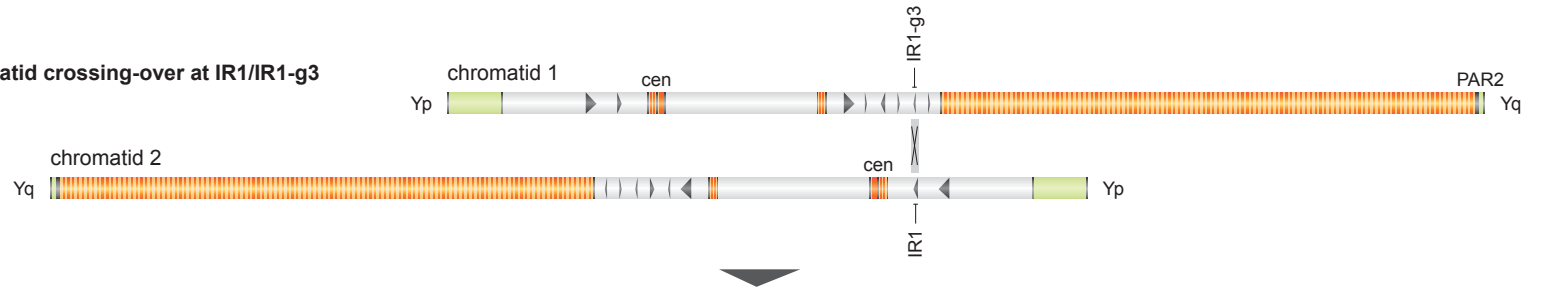
Structure of AZFc

b2/b3 inversion

pDP1335
 RP11-199M2
 17224/17225
 17228/17229
 RP11-516H8
 RP11-363G6
 18E8
 RP11-79J10
 RP11-363G6 + 18E8

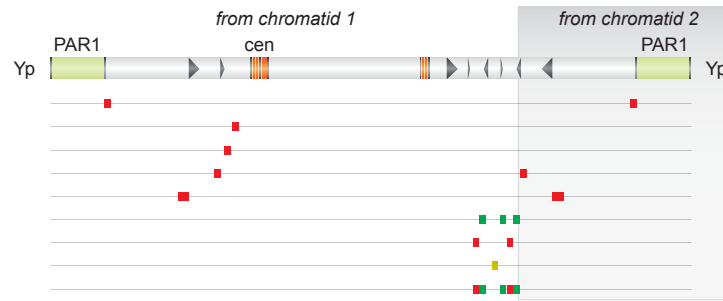


Sister-chromatid crossing-over at IR1/IR1-g3



Pseudoisoy chromosome

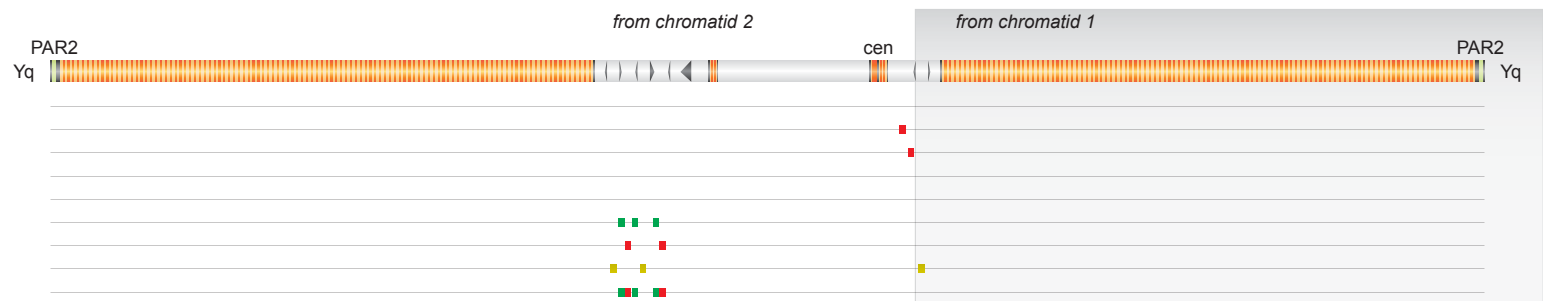
pDP1335
 RP11-199M2
 17224/17225
 17228/17229
 RP11-516H8
 RP11-363G6
 18E8
 RP11-79J10
 RP11-363G6 + 18E8



+

Pseudoisoy chromosome

pDP1335
 RP11-199M2
 17224/17225
 17228/17229
 RP11-516H8
 RP11-363G6
 18E8
 RP11-79J10
 RP11-363G6 + 18E8



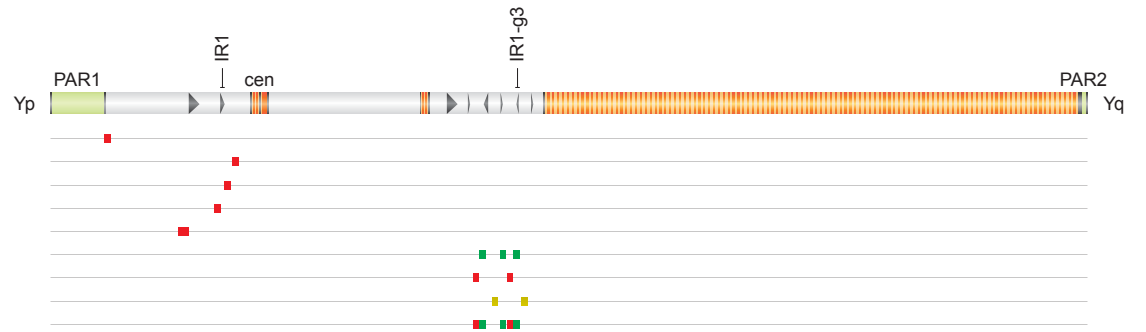
P ii Structure of IR3/IR3

IR3/IR3 inversion

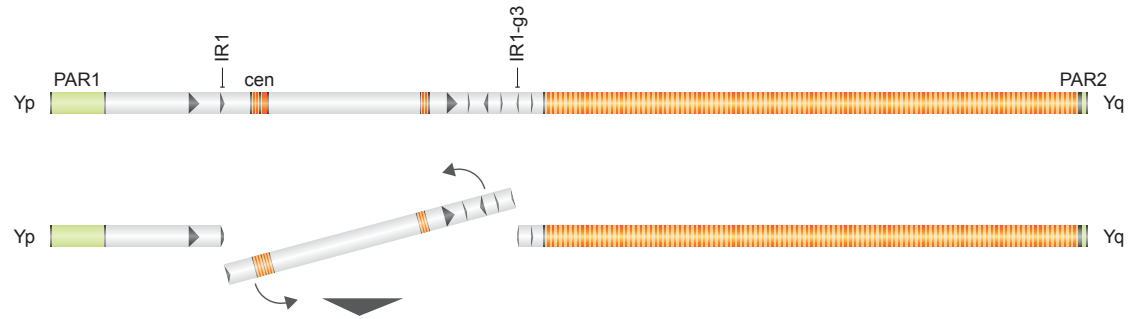
Structure of AZFc

b2/b3 inversion

pDP1335
 RP11-199M2
 17224/17225
 17228/17229
 RP11-516H8
 RP11-363G6
 18E8
 RP11-79J10
 RP11-363G6 + 18E8

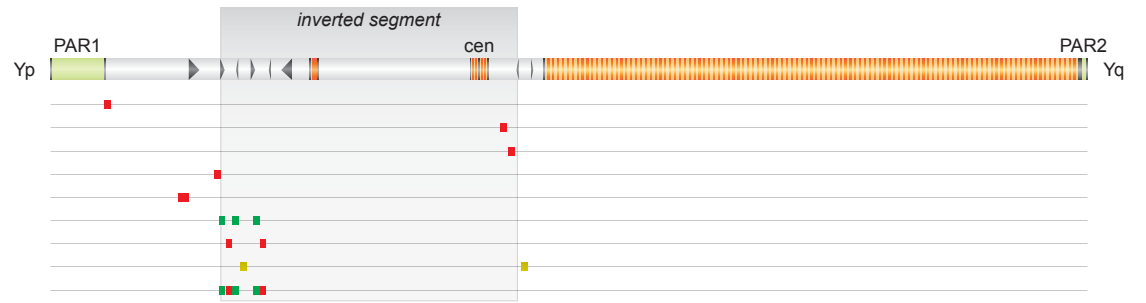


Intrachromatid crossing-over at IR1/IR1-g3



Pericentric inversion

pDP1335
 RP11-199M2
 17224/17225
 17228/17229
 RP11-516H8
 RP11-363G6
 18E8
 RP11-79J10
 RP11-363G6 + 18E8



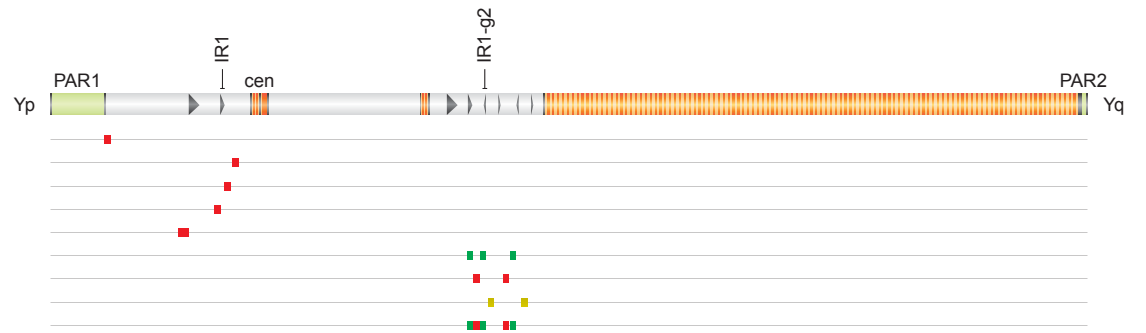
Q i Structure of IR3/IR3

IR3/IR3 inversion

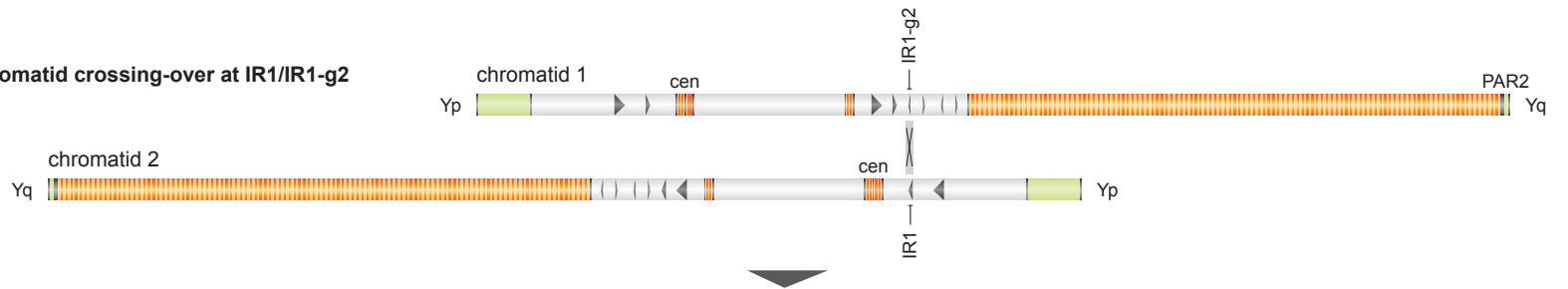
Structure of AZFc

gr/rg inversion

pDP1335
 RP11-199M2
 17224/17225
 17228/17229
 RP11-516H8
 RP11-363G6
 18E8
 RP11-79J10
 RP11-363G6 + 18E8

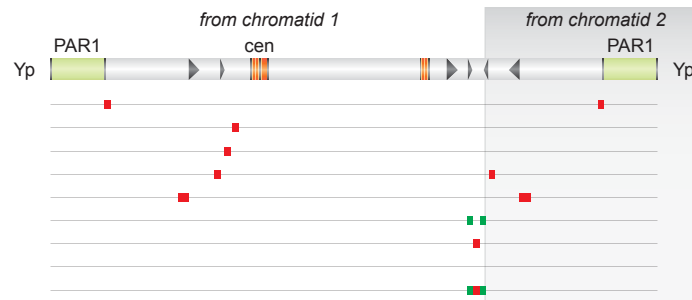


Sister-chromatid crossing-over at IR1/IR1-g2



Pseudoisoy chromosome

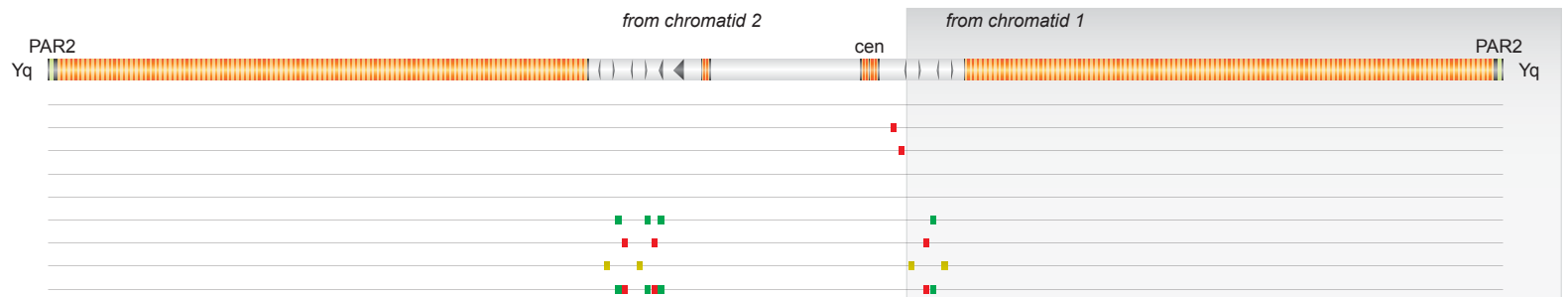
pDP1335
 RP11-199M2
 17224/17225
 17228/17229
 RP11-516H8
 RP11-363G6
 18E8
 RP11-79J10
 RP11-363G6 + 18E8



+

Pseudoisoy chromosome

pDP1335
 RP11-199M2
 17224/17225
 17228/17229
 RP11-516H8
 RP11-363G6
 18E8
 RP11-79J10
 RP11-363G6 + 18E8



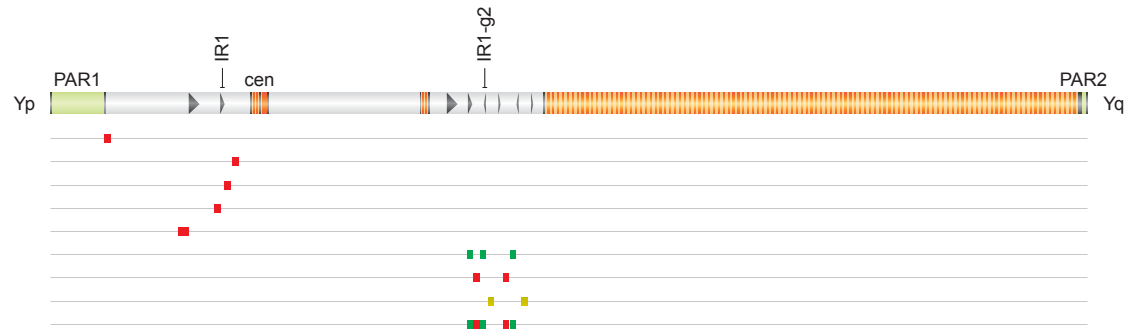
Q ii Structure of IR3/IR3

IR3/IR3 inversion

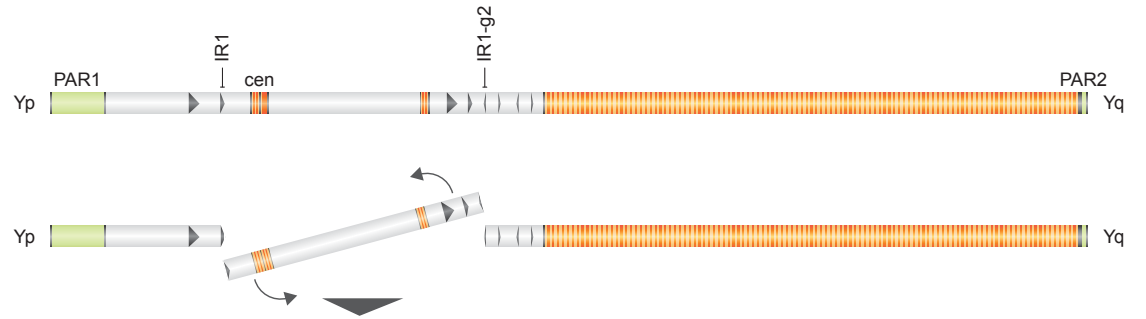
Structure of AZFc

gr/rg inversion

pDP1335
 RP11-199M2
 17224/17225
 17228/17229
 RP11-516H8
 RP11-363G6
 18E8
 RP11-79J10
 RP11-363G6 + 18E8

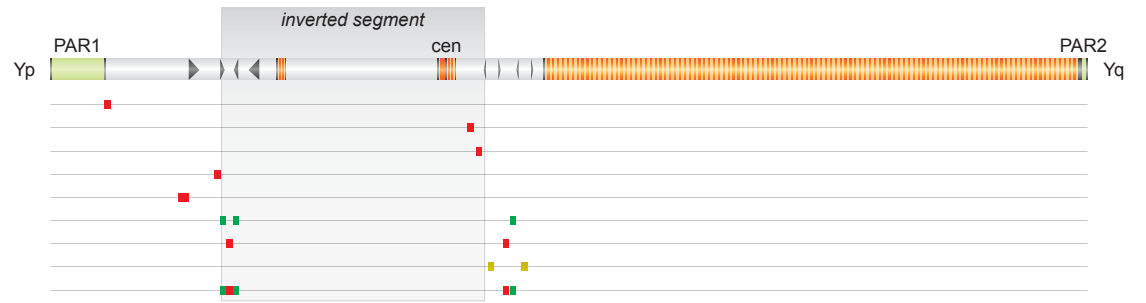


Intrachromatid crossing-over at IR1/IR1-g2



Pericentric inversion

pDP1335
 RP11-199M2
 17224/17225
 17228/17229
 RP11-516H8
 RP11-363G6
 18E8
 RP11-79J10
 RP11-363G6 + 18E8



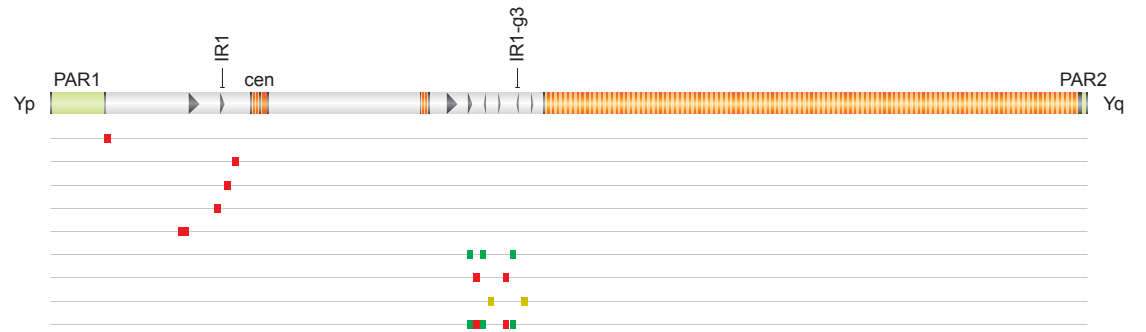
R i Structure of IR3/IR3

IR3/IR3 inversion

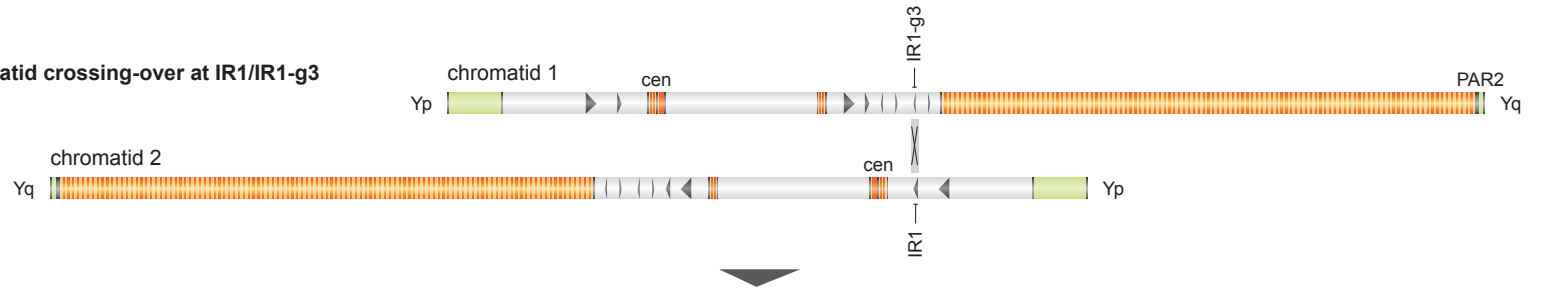
Structure of AZFc

gr/rg inversion

pDP1335
 RP11-199M2
 17224/17225
 17228/17229
 RP11-516H8
 RP11-363G6
 18E8
 RP11-79J10
 RP11-363G6 + 18E8

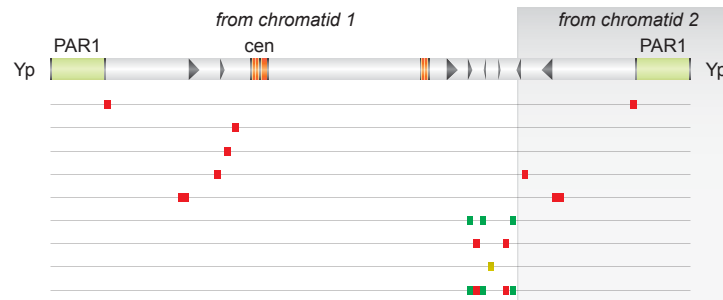


Sister-chromatid crossing-over at IR1/IR1-g3



Pseudoisoy chromosome

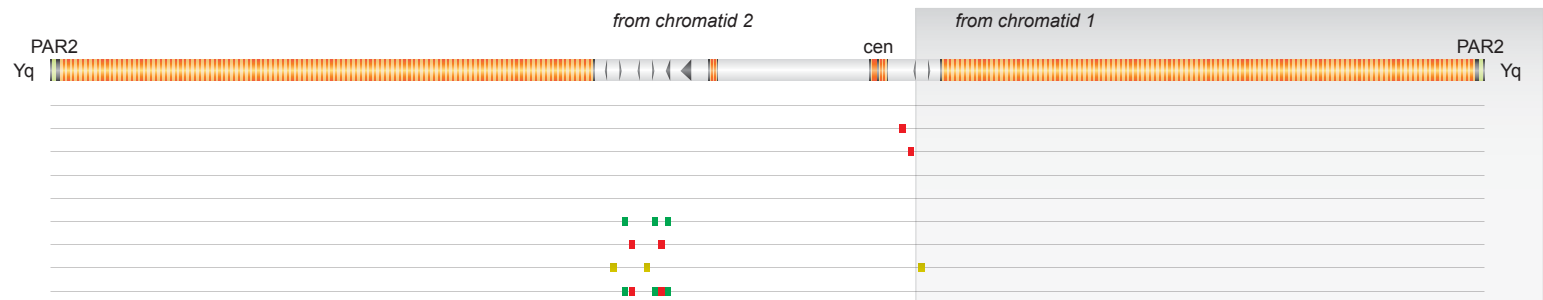
pDP1335
 RP11-199M2
 17224/17225
 17228/17229
 RP11-516H8
 RP11-363G6
 18E8
 RP11-79J10
 RP11-363G6 + 18E8



+

Pseudoisoy chromosome

pDP1335
 RP11-199M2
 17224/17225
 17228/17229
 RP11-516H8
 RP11-363G6
 18E8
 RP11-79J10
 RP11-363G6 + 18E8



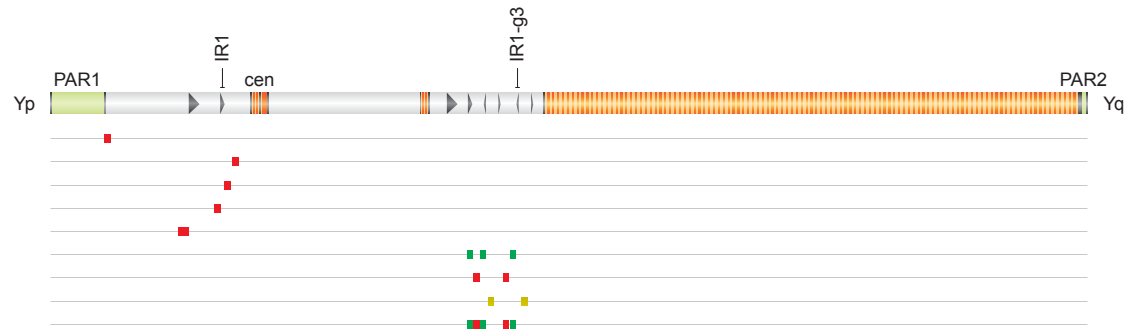
R ii Structure of IR3/IR3

IR3/IR3 inversion

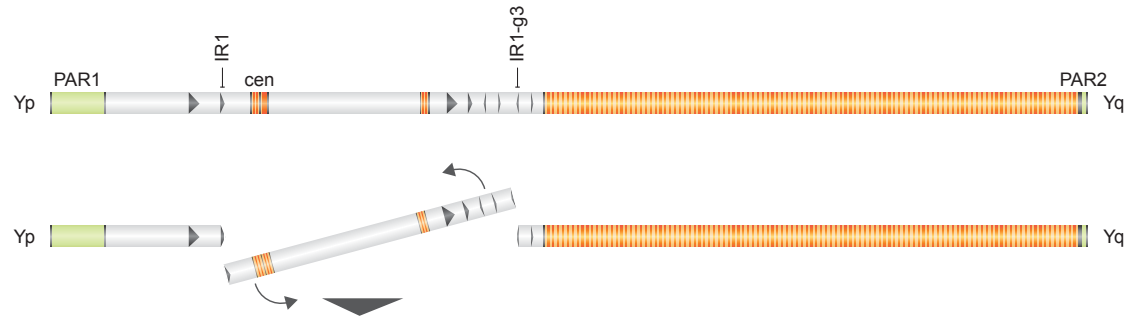
Structure of AZFc

gr/rg inversion

pDP1335
 RP11-199M2
 17224/17225
 17228/17229
 RP11-516H8
 RP11-363G6
 18E8
 RP11-79J10
 RP11-363G6 + 18E8



Intrachromatid crossing-over at IR1/IR1-g3



Pericentric inversion

pDP1335
 RP11-199M2
 17224/17225
 17228/17229
 RP11-516H8
 RP11-363G6
 18E8
 RP11-79J10
 RP11-363G6 + 18E8

