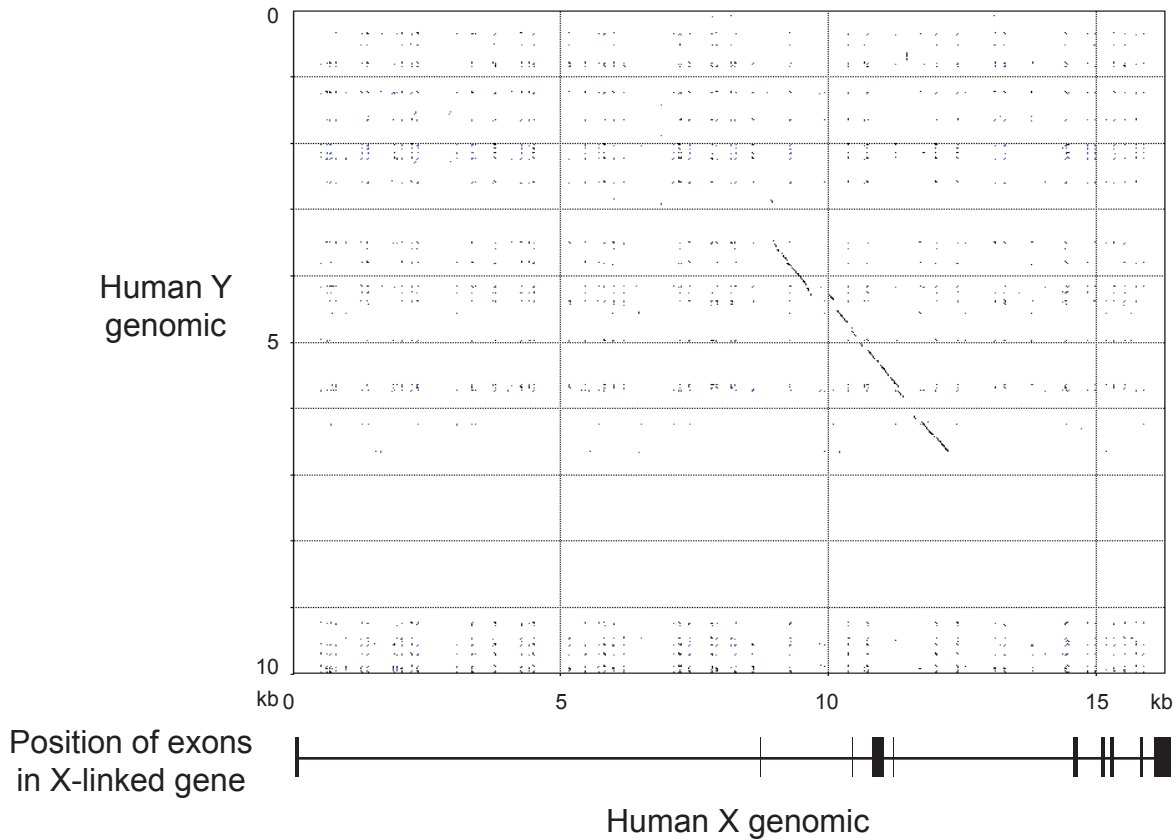


SHROOM2 vs. *SHROOM2P* (Stratum 4)



Supplementary Figure 15d Analysis of MSY ancestral pseudogenes in human. Y-linked *SHROOM2P* vs. X-linked *SHROOM2* dot-plot analysis. On X-axis, human *SHROOM2* genomic sequence. Exon-intron structure of gene is depicted below. On Y-axis, genomic Y sequence from human (pseudogene is deleted in rhesus). A dot represents 70% identity within a 100-bp window. *SHROOM2P* is a stratum 4 pseudogene, and is highly degenerated compared to its X homolog (to an even greater extent than other Stratum 4 pseudogenes -- Supplementary Figures 15a-c), indicating that inactivation likely occurred prior to OWM-ape split. Pattern in chimpanzee is nearly identical to that in human (not shown).