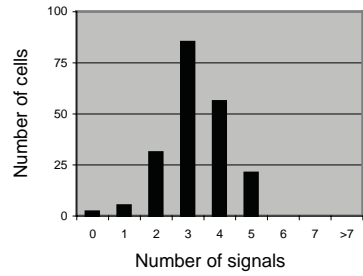
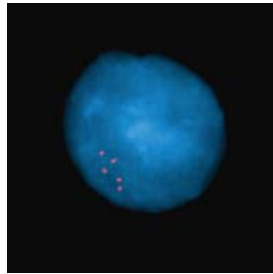
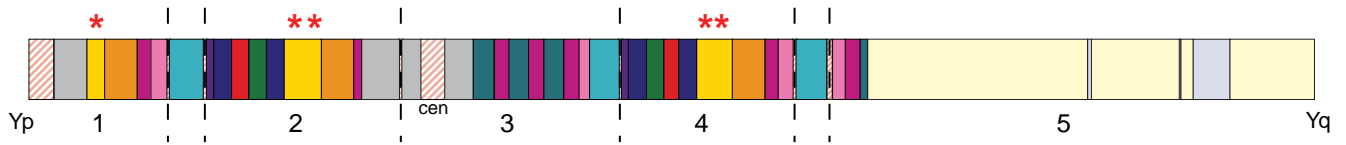
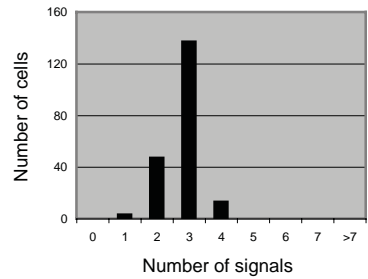
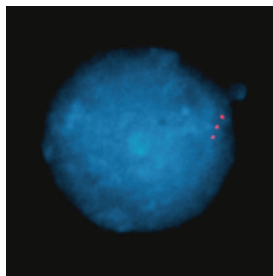
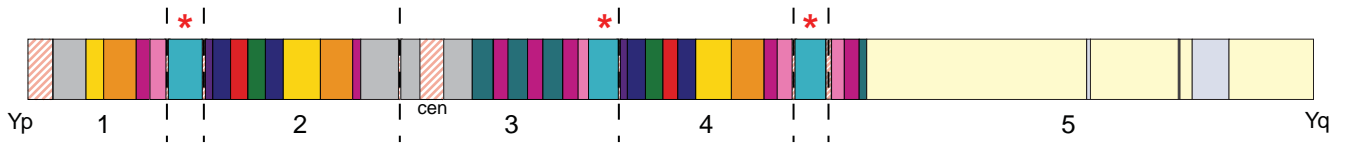


c At least 5 copies of yellow palindrome arm - probe: CH1251-5243L07



d At least 3 copies of aqua palindrome loop - probe: CH1251-5291I08



Supplementary Figure 5c,d Confirmation of copy numbers of amplicons by interphase FISH analysis. For all experiments, nuclei are in G1 and >100 nuclei were counted. Distribution of counts is shown.