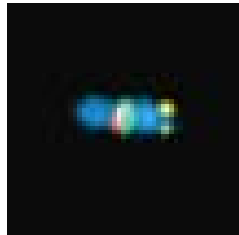
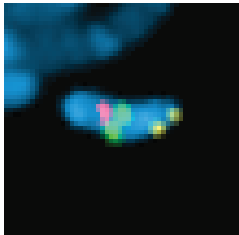
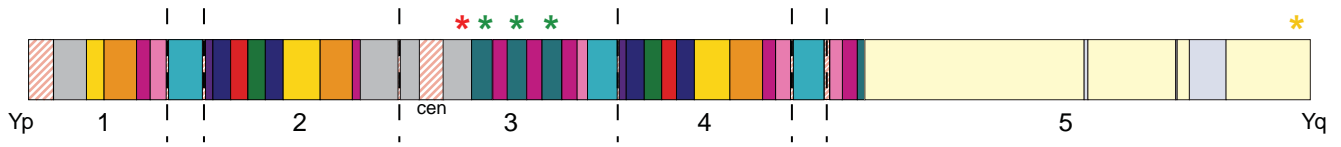


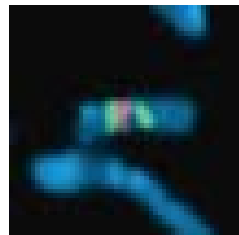
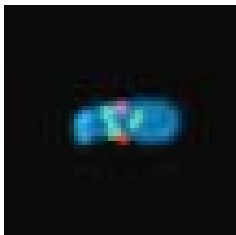
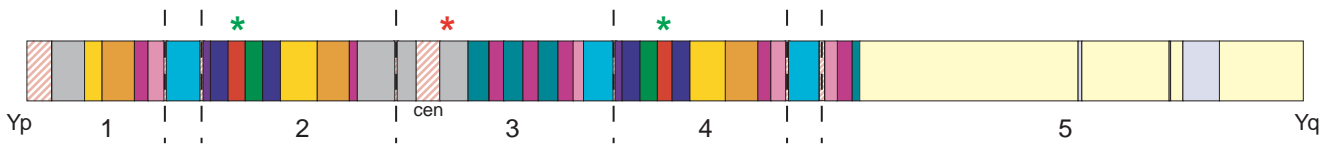
Supplementary Figure 3

d Orientation of contig 3 - CH1251-6085F22(red), CH1251-4428N05(green), CH1251-4221N16(yellow)



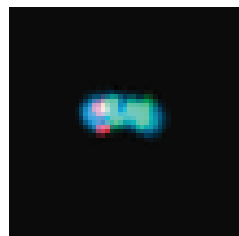
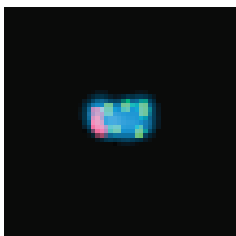
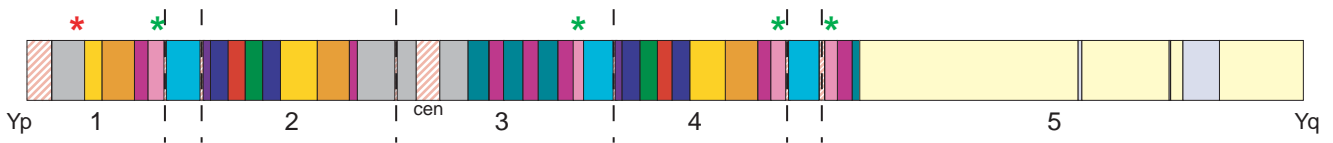
RGY 15X
GRY 1X

e Contig 4 is on long arm - CH1251-6076G10 (red), 18E8 (green)



GRG 10X

f Orientation of contig 1 - probes: CH1251-6687A05 (red), 19708/9 (green)



RGGG 18X
GRGG 2X