

Figure S2

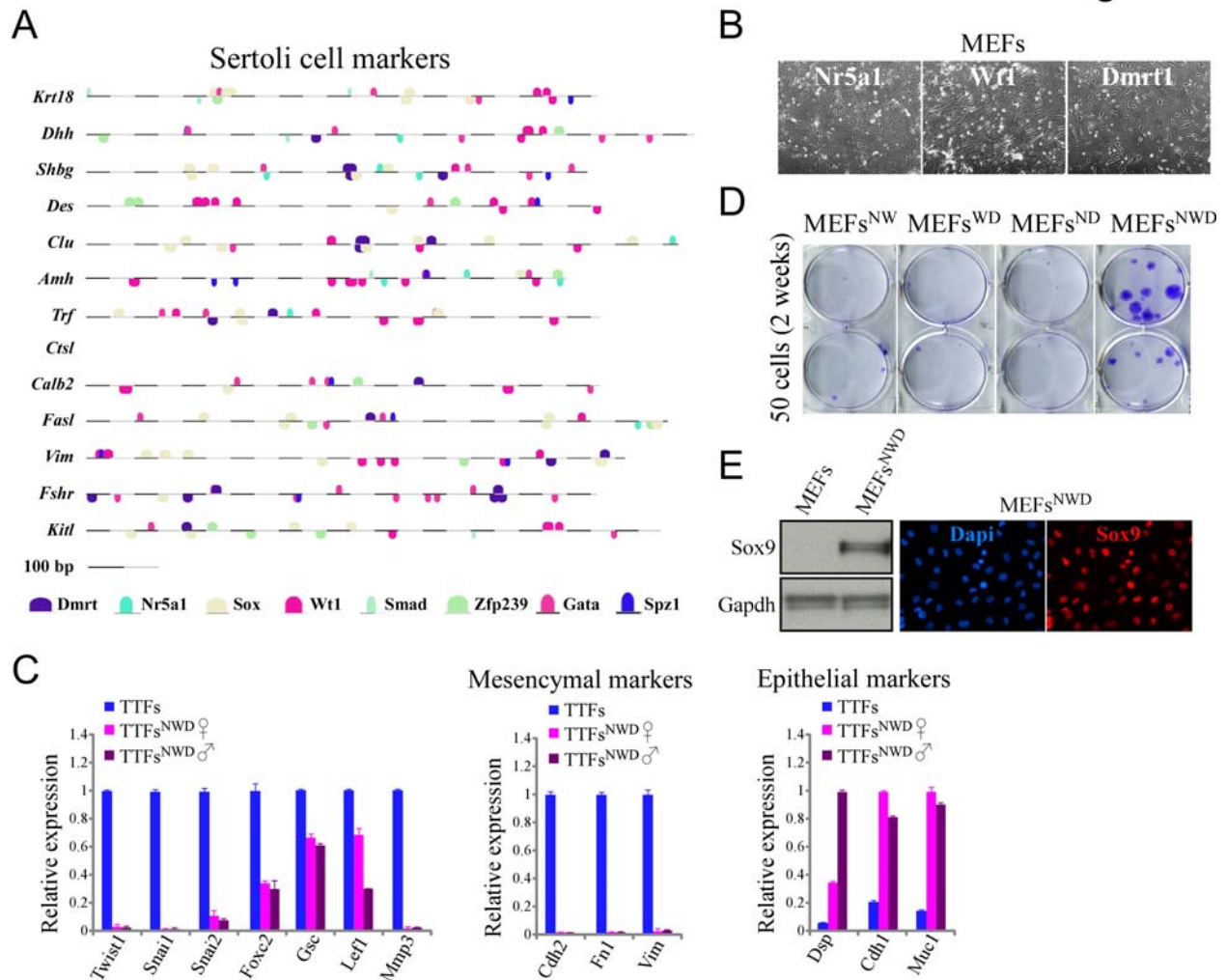


Figure S2. Nr5a1, Wt1 and Dmrt1 promote MET, proliferation and upregulate Sox9 expression. (A) Schematic representation of the various binding sites that are enriched in the promoter (1000 bp upstream to TSS + 5'UTR) of known Sertoli cell markers using the MatInspector software (Cartharius et al., 2005). Each colorful oval shape represents one response element. **(B)** Bright field images of MEFs infected separately with Nr5a1, Wt1 or Dmrt1 and cultured for 3 weeks. **(C)** qRT-PCR of the indicated genes normalized to the *Hprt* housekeeping gene in tail tip fibroblasts (TTFs) from both sexes that were infected with Nr5a1, Wt1 and Dmrt1 (TTFs^{NWD}). **(D)** Colony forming assay of the indicated cells. MEFs were infected with various combinations of Nr5a1 (^N), Wt1 (^W) and Dmrt1 (^D) to test their capability to

from colonies when seeded sparsely for two weeks. The colonies were stained with crystal violet and imaged. **(E)** Left- Western blot analysis for the protein levels of Sox9 in MEFs and MEFs^{NWD}. Right- Immunostaining of Sox9 (red) in MEFs^{NWD}. Error bars represent standard deviation of technical duplicates of the same experiment. Related to main Figure 1.